

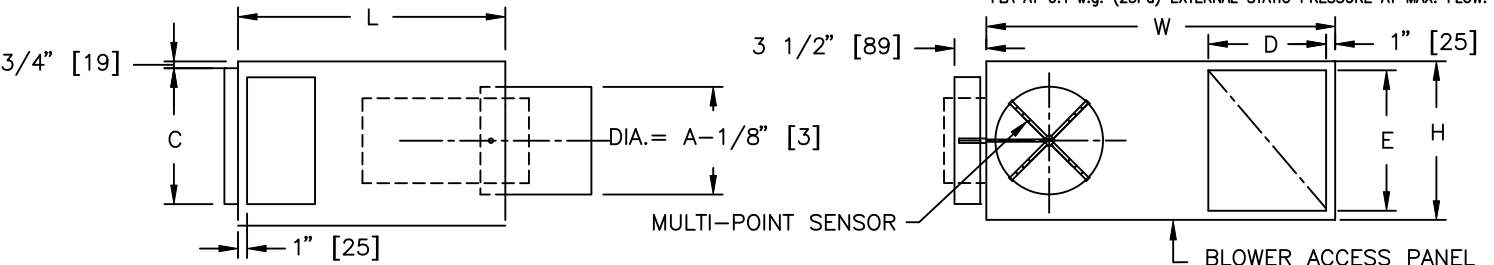
STANDARD MOTOR

UNIT SIZE	MOTOR H.P.	FULL LOAD AMPS			
		115V	208V	240V	277V
20	1/8	2.9	-	-	1.1
30	1/4	-	0.8	0.7	1.7
40	1/2	-	-	-	3.2
50	3/4	-	-	-	4.4
60	1	-	-	-	7.8

ECM MOTOR

UNIT SIZE	MOTOR H.P.	FULL LOAD AMPS		
		115V	240V	277V
20	1/3	3.9	2.2	2.1
30	1/2	7.4	4.3	4.0
40	1/2	7.2	3.8	3.5
50	1	12.6	6.4	5.9
60	1	12.6	6.1	5.4

FLA at 0.1" w.g. (25Pa) EXTERNAL STATIC PRESSURE AT MAX. FLOW.



IMPERIAL UNITS (inches)

UNIT SIZE	PRIMARY AIR INLET A	RETURN AIR INLET		OUTLET DUCT SIZE		W	H	L	GAUGE
		D	E	B	C				
20	6,8,10	12	15½	14	12½	31	17½	25½	22
30	8,10,12	12	15½	14	12½	31	17½	25½	22
40	10,12,14	16	15½	16	15	35	17½	29½	20
50	12,14,16	21	18	20	17½	42¼	20	35	20
60	14,16	21	18	24	18	42¼	20	36¼	20

SI UNITS (mm)

UNIT SIZE	PRIMARY AIR INLET A	RETURN AIR INLET		OUTLET DUCT SIZE		W	H	L	GAUGE
		D	E	B	C				
20	152,203,254	305	394	356	318	787	445	648	22
30	203,254,305	305	394	356	318	787	445	648	22
40	254,305,356	406	394	406	381	889	445	750	20
50	305,356,406	533	457	508	445	1073	508	889	20
60	356,406	533	457	610	457	1073	508	921	20

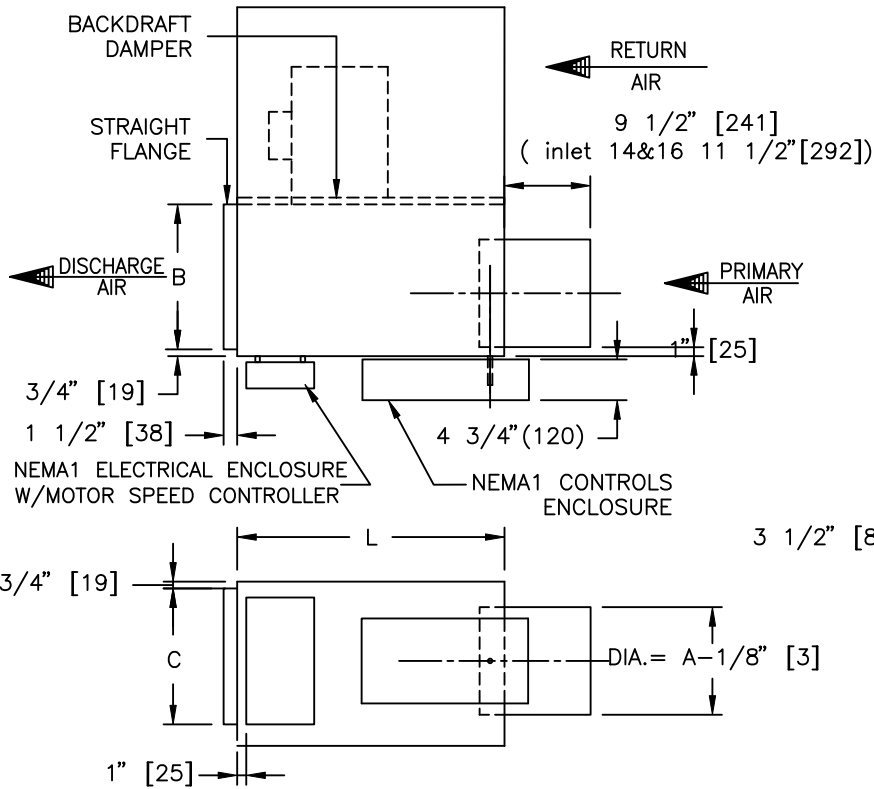
NOTES:

- INTERNAL INSULATION - FIBERGLASS ¾" (19mm) THICK, MIN. 1.5# DENSITY WHICH MEETS REQUIREMENTS OF NFPA 90A AND UL181
- ZINC COATED STEEL HOUSING - GAUGES SHOWN IN TABLE.
- DIGITAL CONTROLS BY CONTROL CONTRACTOR.
- UNITS NOT TO BE USED FOR TEMPORARY HEAT OR VENTILATION DURING CONSTRUCTION.
- MINIMUM 0.1" w.g. (25 PA) EXTERNAL STATIC PRESSURE TO OPERATE. (SZ. 50, 60, 70 AND ELECTRIC HEAT REQUIRE MINIMUM 0.2" w.g. (50 PA))
- REFER TO SUBMITTED BOX SCHEDULE FOR AIR VOLUMES & INLET SIZES.
- CONTROLS MOUNTED ON LEFT HAND SIDE OF UNIT AS ILLUSTRATED.
- ELECTRIC MOTORS 1 PHASE, 60 CYCLE.
- LISTED UL1995 & CSA236 ASSEMBLY.



- OPTIONS:** ECM MOTOR DISCONNECT SWITCH (DSW) CONTROLS ENCLOSURE
 HANGER BRACKETS (HB) SPRING HANGER BRACKETS (HBS) FILTERS CAM LATCHES
 GT - BRASS AIRFLOW SENSOR GAUGE TAPS 20ga CASING (sz.20,30 ONLY)
- LINERS:** FF FF1 FB SM PM AFPM 1" (25mm) FIBERGLASS
- ALL METRIC DIMENSIONS () ARE SOFT CONVERTED. IMPERIAL DIMENSIONS ARE CONVERTED TO METRIC AND ROUNDED TO THE NEAREST MILLIMETER.

PROJECT:		PRICE®	
ENGINEER:			
CUSTOMER:		231171	FDV5000 FAN POWERED TERMINALS VARIABLE VOLUME DIGITAL CONTROLS SIZES 20-60
SUBMITTAL DATE:		2025/06/27	
SPEC. SYMBOL:			



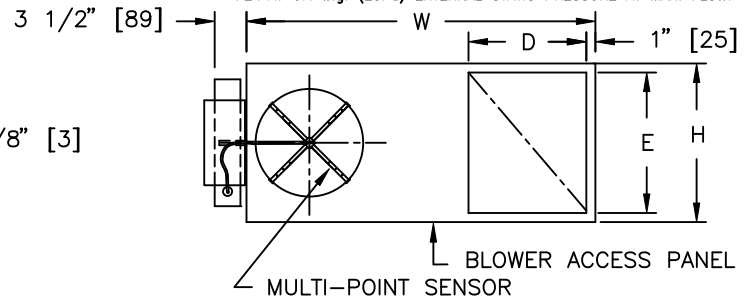
STANDARD MOTOR

UNIT SIZE	MOTOR H.P.	FULL LOAD AMPS			
		115V	208V	240V	277V
20	1/8	2.9	-	-	1.1
30	1/4	-	0.8	0.7	1.7
40	1/2	-	-	-	3.2
50	3/4	-	-	-	4.4
60	1	-	-	-	7.8

ECM MOTOR

UNIT SIZE	MOTOR H.P.	FULL LOAD AMPS		
		115V	240V	277V
20	1/3	3.9	2.2	2.1
30	1/2	7.4	4.3	4.0
40	1/2	7.2	3.8	3.5
50	1	12.6	6.4	5.9
60	1	12.6	6.1	5.4

FLA AT 0.1" w.g. (25Pa) EXTERNAL STATIC PRESSURE AT MAX. FLOW.



IMPERIAL UNITS (inches)

UNIT SIZE	PRIMARY AIR INLET A	RETURN AIR INLET		OUTLET DUCT SIZE		W	H	L	GAUGE
		D	E	B	C				
20	6,8,10	12	15 1/2	14	12 1/2	31	17 1/2	25 1/2	22
30	8,10,12	12	15 1/2	14	12 1/2	31	17 1/2	25 1/2	22
40	10,12,14	16	15 1/2	16	15	35	17 1/2	29 1/2	20
50	12,14,16	21	18	20	17 1/2	42 1/4	20	35	20
60	14,16	21	18	24	18	42 1/4	20	36 1/4	20

SI UNITS (mm)

UNIT SIZE	PRIMARY AIR INLET A	RETURN AIR INLET		OUTLET DUCT SIZE		W	H	L	GAUGE
		D	E	B	C				
20	152,203,254	305	394	356	318	787	445	648	22
30	203,254,305	305	394	356	318	787	445	648	22
40	254,305,356	406	394	406	381	889	445	750	20
50	305,356,406	533	457	508	445	1073	508	889	20
60	356,406	533	457	610	457	1073	508	921	20

NOTES:

- INTERNAL INSULATION - FIBERGLASS 3/4" (19mm) THICK, MIN. 1.5# DENSITY WHICH MEETS REQUIREMENTS OF NFPA 90A AND UL181
- ZINC COATED STEEL HOUSING - GAUGES SHOWN IN TABLE.
- UNITS NOT TO BE USED FOR TEMPORARY HEAT OR VENTILATION DURING CONSTRUCTION.
- MINIMUM 0.1" w.g. (25 PA) EXTERNAL STATIC PRESSURE TO OPERATE. (UNITS WITH ELECTRIC HEAT REQUIRE MINIMUM 0.2" w.g. (50 PA))
- REFER TO SUBMITTED BOX SCHEDULE FOR AIR VOLUMES & INLET SIZES.
- CONTROLS MOUNTED ON LEFT HAND SIDE OF UNIT AS ILLUSTRATED.
- ELECTRIC MOTORS 1 PHASE, 60 CYCLE.
- LISTED UL1995 & CSA236 ASSEMBLY.
- PRICE CONTROLS FACTORY MOUNTED.
- PRICE THERMOSTAT FIELD MOUNTED.



- OPTIONS: ECM MOTOR DISCONNECT SWITCH (DSW) 20ga CASING (sz.20,30 ONLY) FILTERS
 HANGER BRACKETS (HB), SHIPPED LOOSE SPRING HANGER BRACKETS (HBS) CAM LATCHES
 LINERS: FF FF1 FB SM PM AFPM 1" (25mm) FIBERGLASS
 ALL METRIC DIMENSIONS () ARE SOFT CONVERTED. IMPERIAL DIMENSIONS ARE CONVERTED TO METRIC AND ROUNDED TO THE NEAREST MILLIMETER.

PROJECT:		PRICE [®]	
ENGINEER:		G	FDV8000
CUSTOMER:		240367	FAN POWERED TERMINALS VARIABLE VOLUME PRICE CONTROLS SIZES 20-60
SUBMITTAL DATE:	SPEC. SYMBOL:	2025/06/27	