



CONDENSATE PUMP – BLOWER COILS & FCHG (115 – 230V)

Little Giant VCCA-20-P Series

FEATURES

- + The pump is labeled “suitable for use in air handling spaces”
- + 1/30 hp motor
- + Low profile for limited space applications
- + 72” 3-conductor lead wires with adjustable conduit fitting for 1/2” diameter flexible metal conduit
- + 1/4-turn, twist-off locking check valve discharge adapter for 3/8” ID tubing
- + Additional check valve included for 3/8” copper tubing
- + Pump switch test lever (for manual test operation)
- + Rubber feet on bottom of tank to isolate pump when placed on hard surface
- + Three 1-1/8” diameter inlets
- + Easy-to-knock-out plugs in two of the inlet openings
- + Includes overflow detection switch with 72” leads
- + Intermittent liquid temperature up to 140 °F
- + Designed for hard-wire installation only
- + Thermal overload protection
- + Stainless steel motor shaft
- + cCSAus

SERIES SPECIFICATIONS

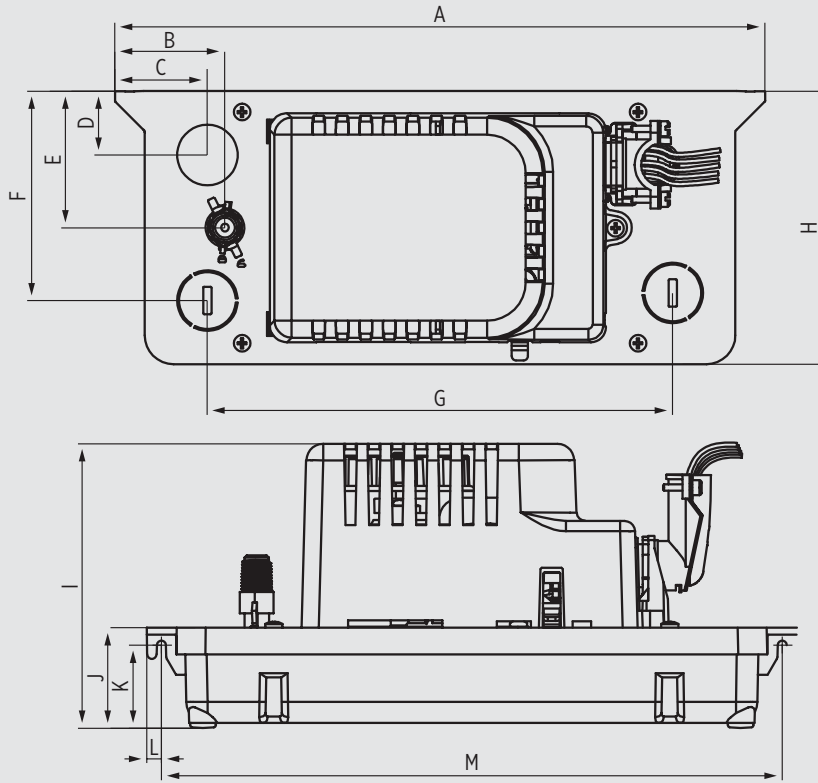
Item No.	Model	HP	Volts	Hz	Amps	Watts	Discharge	Gallons per hour (Liters per hour) @ Height				Shut-Off	PSI	Cord	Weight lbs (kg)
								1'	5'	10'	18'				
554221101	VCCA-20-P	1/30	115	60	1.5	93	3/8" (9.5mm) OD Barded	80 (303)	70 (265)	45 (171)	10 (38)	20' (6.1m)	8.6	6' (1.8m)	4.5 (2.1 kg)
554222101	VCCA-20-P	1/30	230	50/60	0.6/0.5	75	3/8" (9.5mm) OD Barded	80 (303)	70 (265)	45 (171)	10 (38)	17' (5.2m)	7.4	6' (1.8m)	4.5 (2.1 kg)

NOTE: Flow rating is through check valve

CONDENSATE PUMP – BLOWER COILS & FCHG (115 – 230V)

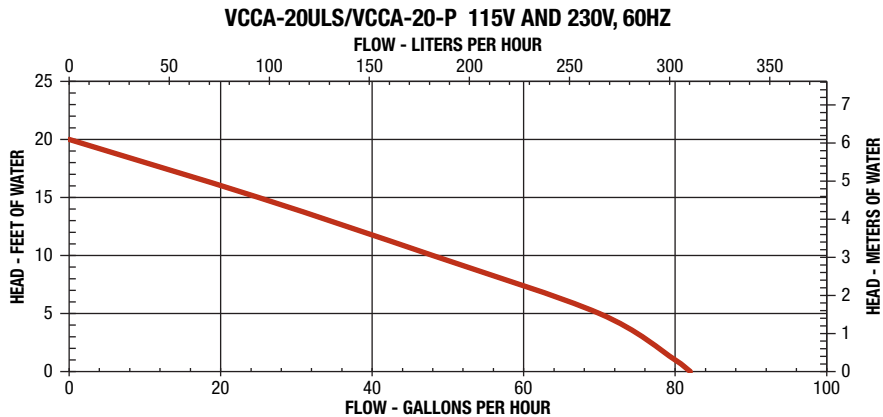
Little Giant VCCA-20-P Series

ENGINEERING DATA



A	B	C	D	E	F	G	H	I	J	K	L	M
11.99"	2.02"	1.70"	1.18"	2.52"	3.85"	8.57"	5.03"	5.24"	1.85"	1.52"	0.27"	11.42"
(304.5 mm)	(51.4 mm)	(43.2 mm)	(30 mm)	(64 mm)	(98 mm)	(217.8 mm)	(127.7 mm)	(133.2 mm)	(47 mm)	(38.8 mm)	(6.9 mm)	(290 mm)

PERFORMANCE DATA





CONDENSATE PUMP – BLOWER COILS & FCHG (115 – 277V)

Hartell KL-1 Pumps

KEY FEATURES

- + Max Temp: 212°F (100°C)
- + Inlet: two 1" (25 mm) NPT
- + Outlet: 3/8" (9.5 mm) Barbed
- + Noise Level: 48 dBA
- + Power Cord Type: Hardwired
- + Dimensions: 10 x 5.5 x 4.75" (25 x 14 x 12 cm)
- + Weight: 6 lbs (2.7 kg)
- + Tank Capacity: 1 qt (1 L)

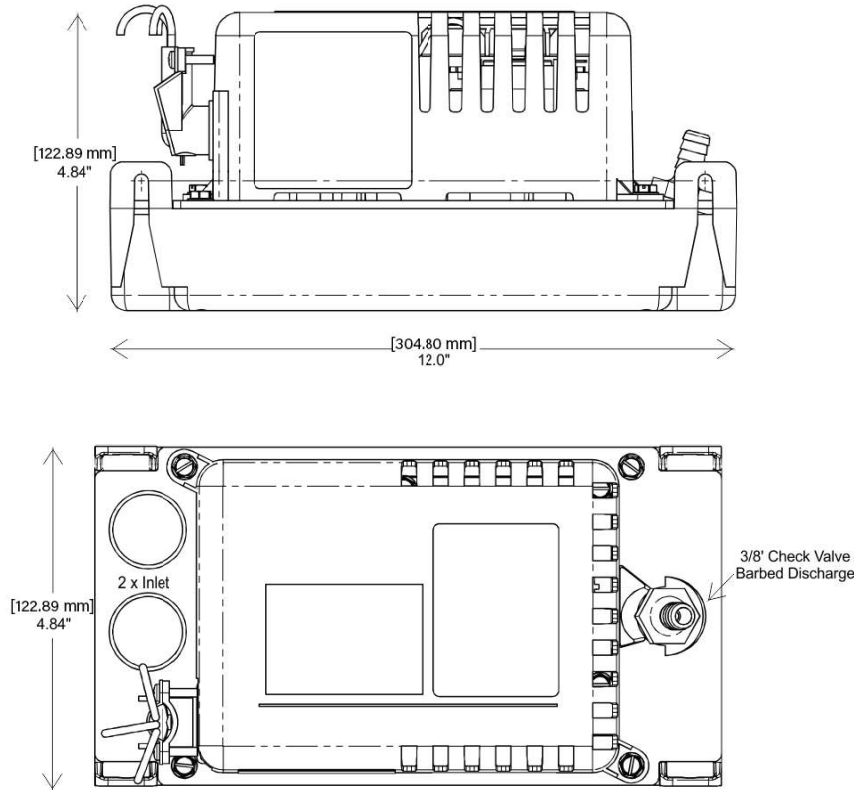
BENEFITS

- + UL 2043 Plenum Rated
- + 1-quart reservoir, low-profile height of 1-3/4 in
- + Auxiliary safety switch

CONDENSATE PUMP – BLOWER COILS & FCHG (115 – 230V)

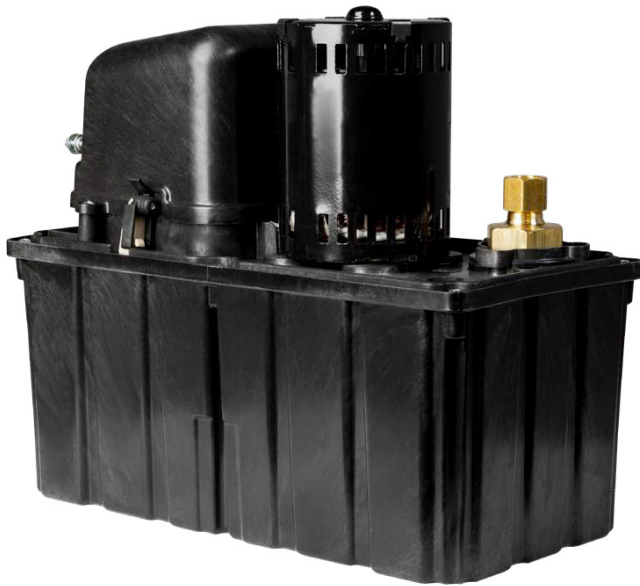
Hartell KL-1 Pumps

ENGINEERING DATA



	KL-1DG-115 (#801030)	KL-1DG-230 (#801049)	KL-1DG-277 (#801053)
Voltage	115	230	277
Hz	60	60	50/60
Amps	1.40	0.55	0.53
Watts	77	66	73
Electrical hp	0.10	0.09	0.10

	KL-1DG-X
Max Lift	14' (4.26 m)
2' (0.6 m)	89 GPH (345 LPH)
4' (1.22 m)	72 GPH (280 LPH)
6' (1.8 m)	55 GPH (208 LPH)
12' (3.7 m)	38 GPH (144 LPH)



HT-VCL-30-P



HT-VCL-60-P



CONDENSATE PUMP – BLOWER COILS & FCHG (277V)

Little Giant HT-VCL-P Series

FEATURES

- + 1-gallon collection tank
- + Maximum water temperature: 212 °F (100 °C)
- + Suitable for plenum applications
- + Stainless steel motor shaft
- + 1.07" diameter inlet (with 0.69" diameter rubber grommet)
- + Includes float-activated switch for automatic high-level water detection (overflow detection switch)
- + 14' lead wires for power supply and overflow detection connection
- + Includes adjustable right angle conduit fitting for use with flexible EMT
- + Brass check valve with compression nut and ferrule for 1/2" copper tubing
- + Compliant with UL 2043 standard
- + Includes bottom inlet when drain outlet height is limited

SERIES SPECIFICATIONS

HT-VCL-30-P SERIES

Item No.	Volts	HP	Hz	Amps	Watts	Gallons per hour (Liters per hour) @ Height									Shut-Off	PSI
						5'	10'	15'	20'	25'	30'	40'	50'	60'		
553130101	115	1/8	60	1.4	134	350 (1325)	320 (1211)	275 (1041)	225 (852)	160 (227)	60 (227)	-	-	-	32' (9.1 m)	13.9
553130102	208-230			0.7	90											
553130104	277			0.6	81											

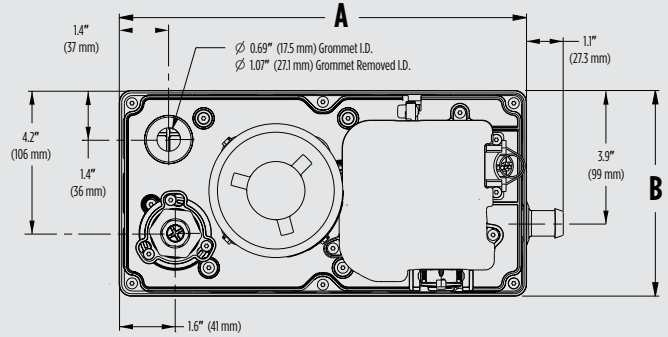
HT-VCL-60-P SERIES

Item No.	Volts	HP	Hz	Amps	Watts	Gallons per hour (Liters per hour) @ Height									Shut-Off	PSI
						5'	10'	15'	20'	25'	30'	40'	50'	60'		
553160101	115	1/3	60	3.5	292	575 (2176)	560 (2120)	530 (2006)	505 (1911)	478 (1809)	450 (1703)	375 (1419)	262 (992)	66 (250)	62' (18.3 m)	26.9
553160102	208-230			1.8	300											
553160104	380-460			1.0	300											

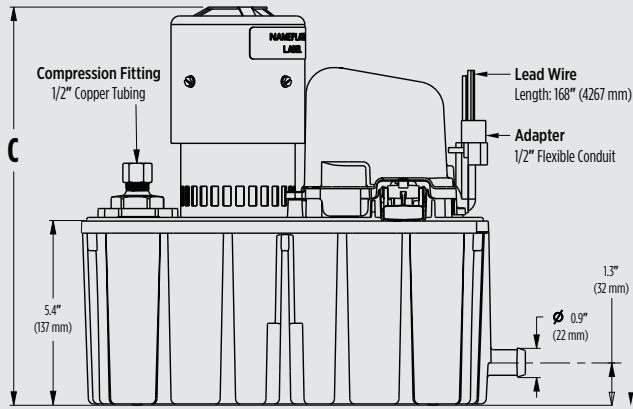
CONDENSATE PUMP – BLOWER COILS & FCHG (277V)

Little Giant HT-VCL-P Series

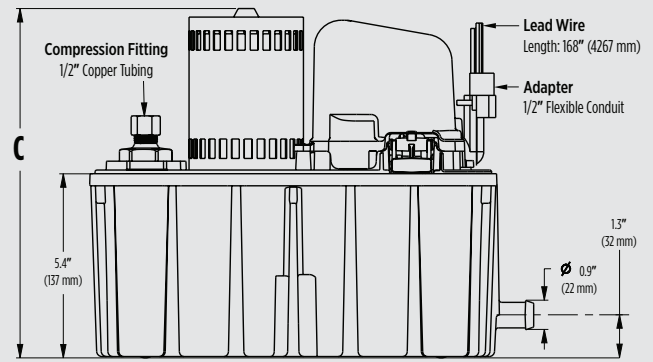
ENGINEERING DATA



HT-VCL-60-P SERIES

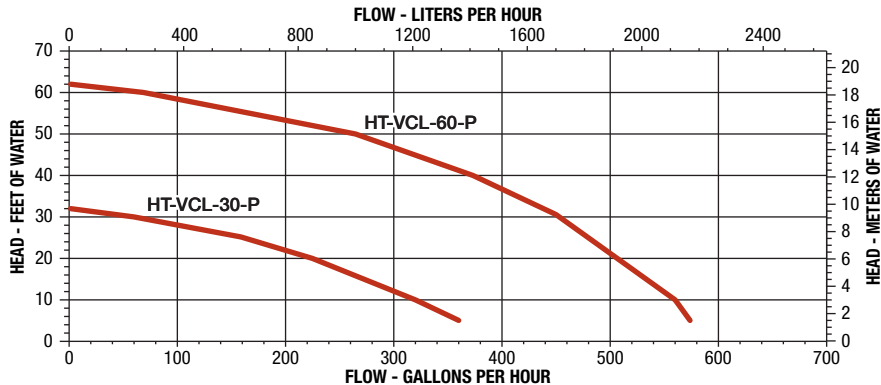


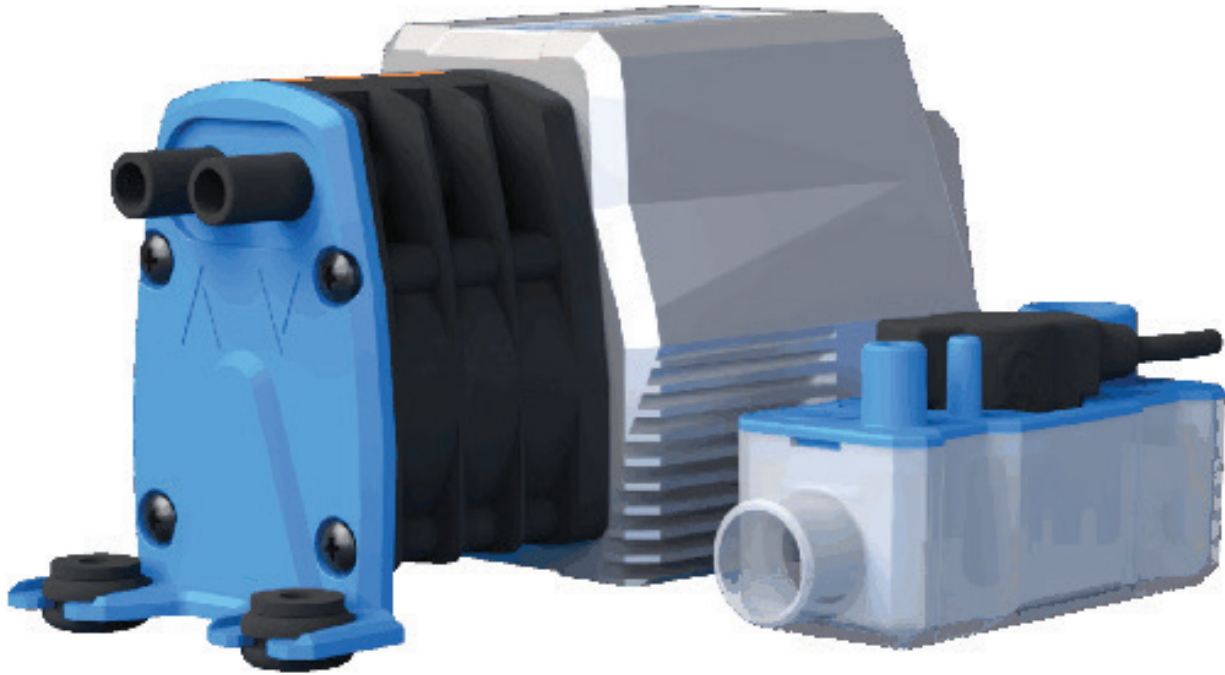
HT-VCL-30-P SERIES



Model	A	B	C	Weight lbs (kg)
HT-VCL-30-P	12.0" (30.5 cm)	6" (15.3 cm)	10.2" (26 cm)	9.5 (4.3 kg)
HT-VCL-60-P	12.0" (30.5 cm)	6" (15.3 cm)	11.7" (29.6 cm)	12.5 (5.7 kg)

PERFORMANCE DATA





CONDENSATE PUMP – FAN COILS 115 – 230V (277V COMING SOON)

Blue Diamond Maxi Blue

FEATURES

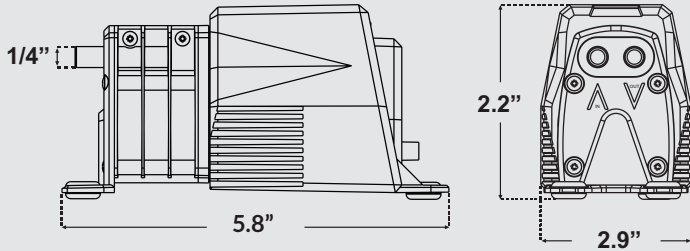
- + Automatic priming without the need to manually siphon.
- + Enhanced Rotary Diaphragm technology to prevent bio-film build-up.
- + Dynamic condensate monitoring for active condensate tracking and monitoring.
- + CondenSense™ integration for intelligent, demand-based operation with automatic flow adjustment.
- + Energy and sound efficiency minimises power usage and reduces operational sound.
- + Soft start sequencing ensures smooth, quiet system activation and prolongs pump life.

CONDENSATE PUMP – BLOWER COILS & FCHG (277V)

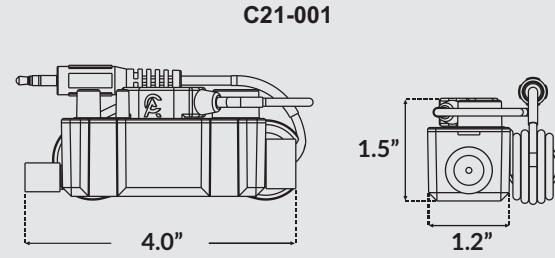
Blue Diamond Maxi Blue

ENGINEERING DATA

PUMP DIMENSION (INCHES “)



RESERVOIR DIMENSION (INCHES “)



*Power and alarm connection lead - 6.5 Feet

*Aux connection lead - 6.5 Feet

PERFORMANCE

Max Flow	3.7 Gallons Hour
Max Head	26 Feet
Max Lift	26 Feet
Sound Range	19–21 dB(A) (Low–High Flow)
Alarm Type	Volt Free, Audio, LED
UNIT	
Max A/C KW	48,000 BTU

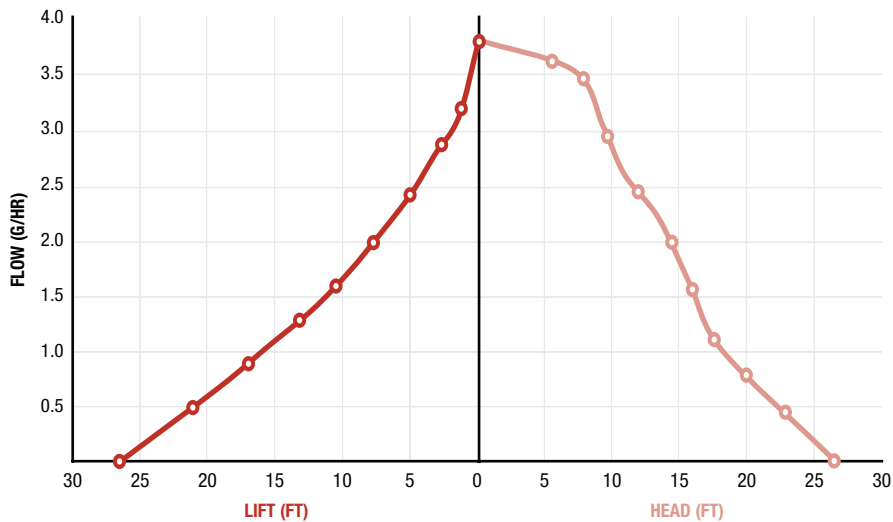
CONSUMPTION

Voltages	115-230V
Frequency	50/60Hz
Draw (A)	0.03 ^(115V) , 0.05 ^(230V)
Power (W)	5.5W
Power (VA)	5.7VA
Power Factor	0.96
IP Rating	IP4X

SIZING (LXWXH)

Dimensions	5.8" x 2.2" x 2.9"
Weight	22.5 Oz
Inlet	1/4" Straight
Outlet	1/4" Straight
Alarm lead	6.5 Feet
Reservoir	4.0" x 1.2" x 1.5"

PERFORMANCE DATA



The graph presents flow, head, and lift performance for the MaxiBlue® V2's operating conditions, showing how each parameter varies with system demand.