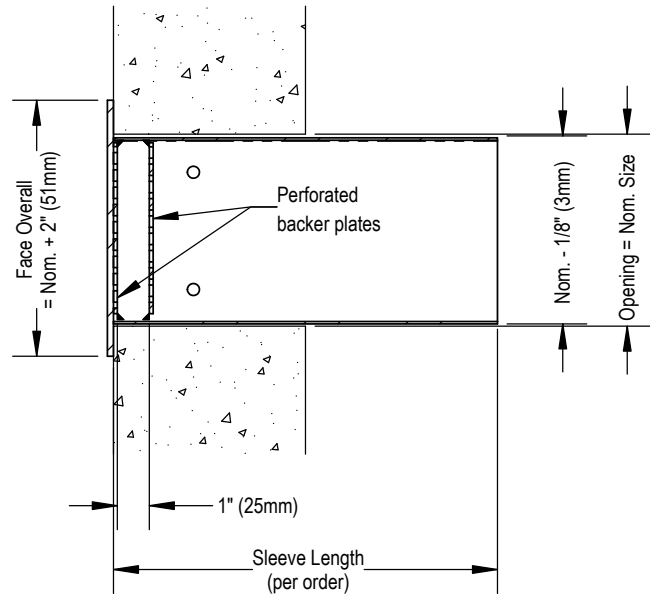
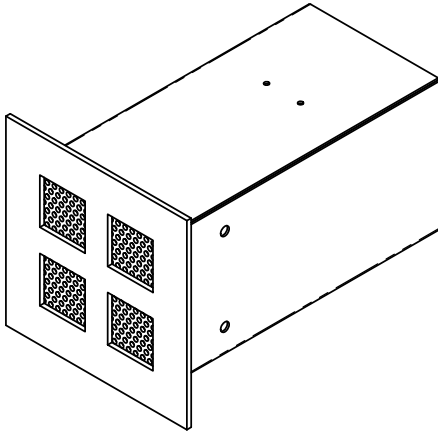


MSLGP - Lattice Backed Perforated Security Grille



MATERIAL:

- Steel

AVAILABLE SIZES:

- Minimum size 6" x 6" (152mm x 152mm)
- Maximum size 30" x 30" (762mm x 762mm)
- Fractional sizes available

FACE PLATE:

- FP187 - 3/16" (5mm)
- Pattern L1 - 2" (51mm) Square holes with 1" (25mm) fret

BACKER PLATE:

- BP12 x 2 - Double backer plates, 12ga
- P2 pattern - 3/16 dia. (5mm) holes, staggered 60° on 5/16" (8mm) centers

STANDARD FINISH:

- B12 - Standard White

OPTIONAL FINISHES:

- Optional colors
- Custom colors



See finishes brochure for additional information.

Contact your PRICE representative for leadtimes and pricing.

SLEEVE:

- Minimum length:
 - 6" (152mm) with mounting angles
 - 2" (51mm) with no fastening supplied
 - 6" (152mm) with barrier bars
 - 4" (102mm) with VCS3BR damper
 - 12" (305mm) with barrier bars and VCS3BR damper
- Maximum length 26" (660mm)
- Sleeve length approximately 4" (102mm) larger than wall thickness is recommended to allow for mounting angles and duct connection
- SLEEVE GAUGE:
 - S187 - 3/16" (5mm)
- WELDS:
 - Stitch welded (standard)
 - CWS - Continuously welded seams

ALL METRIC DIMENSIONS () ARE SOFT CONVERTED. IMPERIAL DIMENSIONS ARE CONVERTED TO METRIC AND ROUNDED TO THE NEAREST MILLIMETER

PROJECT:			
ENGINEER:			
CUSTOMER:		 278968	MSLGP LATTICED BACKED PERFORATED SECURITY GRILLE
SUBMITTAL DATE:	SPEC. SYMBOL:	2025/08/25	

Submittal Sheet

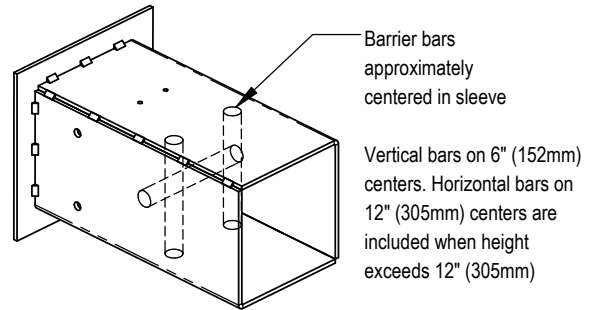
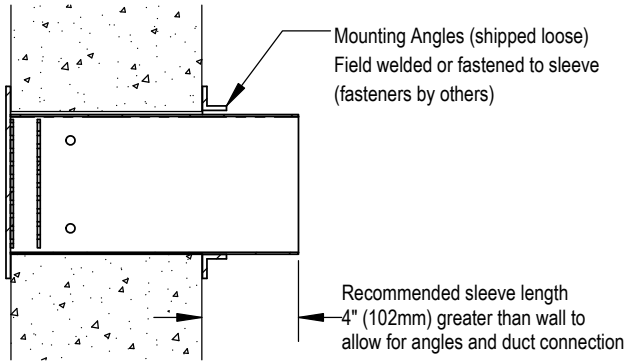
MSLGP - Lattice Backed Perforated Security Grille

FASTENING OPTIONS:

- MF1 - 1" x 1" x 3/16" (25mm x 25mm x 5mm) angle frame
- MF2 - 1 1/2" x 1 1/2" x 3/16" (38mm x 38mm x 5mm) angle frame
- MF3 - 1" x 1" x 1/8" (25mm x 25mm x 3mm) angle frame
- MF4 - 1 1/2" x 1 1/2" x 1/8" (38mm x 38mm x 3mm) angle frame

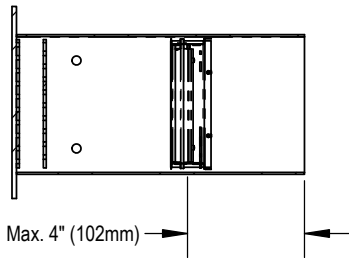
BARRIER BARS (OPTIONAL):

- BB16 - 1/2" (13mm) dia. bars
- BB17 - 3/4" (19mm) dia. bars
- BB19 - 1/2" (13mm) dia. hardened bars in sockets
- BB20 - 3/4" (19mm) dia. hardened bars in sockets
- BB22 - 2" x 1/4" (51mm x 6mm) flat bars



DAMPER (OPTIONAL):

- VCSRBR - steel opposed blade damper, rear operated
(not available with fractional sizing) (max 24" x 24" (610mm x 610mm))



Scan link to additional
product information

ALL METRIC DIMENSIONS () ARE SOFT CONVERTED. IMPERIAL DIMENSIONS ARE CONVERTED TO METRIC AND ROUNDED TO THE NEAREST MILLIMETER

PROJECT:		PRICE [®]	
ENGINEER:			
CUSTOMER:		278968	MSLGP LATTICED BACKED PERFORATED SECURITY GRILLE
SUBMITTAL DATE:	SPEC. SYMBOL:	2025/08/25	