

UNIT SIZE	L	W	A	B
9	15 1/2 (394)	17 1/2 (445)	10 (254)	3 13/16 (97)
10			12 (305)	
12			16 (406)	
14	19 (483)	30 (762)	21 (533)	5 5/16 (135)
16			29 (737)	



STANDARD CONSTRUCTION:

- 1/2" (13mm) THICK INTERNAL FIBERGLASS INSULATION WHICH MEETS REQUIREMENTS OF NFPA 90A AND UL181.
- 22 GAUGE GALVANIZED STEEL HOUSING. MECHANICALLY SEALED, LEAK RESISTANT CONSTRUCTION.
- RECTANGULAR DISCHARGE OPENING WITH SLIP AND DRIVE CLEAT DUCT CONNECTION.
- MULTI-POINT, CENTER AVERAGING AIRFLOW SENSOR.
- 1/2" (13mm) GALVANIZED DAMPER SHAFT WITH POSITION INDICATOR.
- RIGHT HAND UNIT SHOWN (CRH), LEFT HAND AVAILABLE.

CONTROLS OPTIONS:

- FIELD MOUNTED CONTROLS, SUPPLIED BY OTHERS (FLD)
- FACTORY MOUNTED DIGITAL CONTROLS, SUPPLIED BY OTHERS (FAC)

CONTROLS SUPPLIED AND MOUNTED BY PRICE (EHP):

- DIGITAL CONTROLS (DIG)
- PNEUMATIC CONTROLS (PNEU)

UNIT OPTIONS:

- NEMA1 CONTROLS ENCLOSURE (PS)
- DISCONNECT SWITCH (DSW)
- 20 GAUGE CASING (20GA)
- HANGER BRACKETS (HB)
- BRASS AIRFLOW SENSOR GAUGE TAPS (GT)

BOTTOM ACCESS DOOR:

- ACCESS DOOR WITH SCREWS (AD)
- ACCESS DOOR WITH SNAP LATCHES (ADL)
- ACCESS DOOR WITH QUARTER TURN LATCHES (ADQ)

COIL ACCESS DOOR (UPSTREAM/DOWNSTREAM):

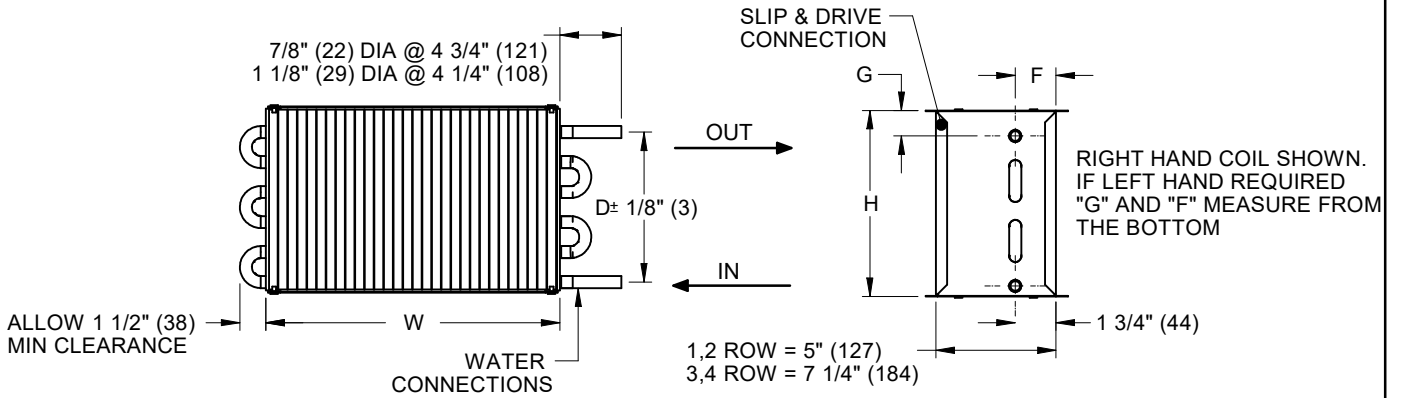
- DUAL ACCESS DOOR WITH SCREWS (ADD)
- DUAL ACCESS DOOR WITH SNAP LATCHES (ADDL)
- DUAL ACCESS DOOR WITH QUARTER LATCHES (ADDQ)

LINER OPTIONS:

- FIBER FREE FOAM 1/2" (13mm) (FF50)
- FOIL FACED FIBERGLASS BOARD 5/8" (16mm) (FB)
- SOLID METAL WITH FG50 (SM50)
- CLEANROOM ANGLES WITH FB (CRAF)
- PERFORATED METAL WITH FB (AFPM)

ALL METRIC DIMENSIONS () ARE SOFT CONVERTED. IMPERIAL DIMENSIONS ARE CONVERTED TO METRIC AND ROUNDED TO THE NEAREST MILLIMETER.

PROJECT:		PRICE
ENGINEER:		
CUSTOMER:		GH
SUBMITTAL DATE:		274049
SPEC. SYMBOL:		06/22/2023
SDVLP SINGLE DUCT TERMINAL VARIABLE VOLUME LOW PROFILE WATER COIL		



UNIT SIZE	W	H	D				F				G			COIL CONNECTIONS	
			1 ROW	2 ROW	3 ROW	4 ROW	1 ROW	2 ROW	3 ROW	4 ROW	1 ROW STANDARD & HC	2 ROW STANDARD & HC	3&4 ROW	1&2 ROW	3&4 ROW
9,10	17 1/2" (445)	10" (254)	8 5/16" (211)	8 15/16" (227)	8" (203)	8 7/8" (225)	3 1/2" (89)	2 7/8" (73)	3 7/8" (98)	5" (127)	5/8" (16)	5/8" (16)	3/4" (19)	7/8" (22)	1 1/8" (29)
12	24" (610)														
14	30" (762)														
16	38" (965)														

STANDARD CONSTRUCTION:

- FABRICATED FROM 22 GAUGE GALVANIZED STEEL MECHANICALLY SEALED, LEAK RESISTANT CONSTRUCTION.
- HOT WATER COILS HAVE COPPER TUBES AND ALUMINUM FINNS WITH O.D. SWEAT CONNECTIONS.
- REFER TO SUBMITTED TERMINAL UNIT SCHEDULE FOR AIR VOLUMES AND REHEAT COIL CAPACITIES.
- METHOD OF VENTING REHEAT COIL IS TO BE PROVIDED BY INSTALLING CONTRACTOR.
- HAND OF WATER COIL IS DETERMINED WHEN VIEWED FROM AIR INLET SIDE WITH ACCESS DOOR ON BOTTOM.
- PERFORMANCE RATED AND CERTIFIED IN ACCORDANCE WITH THE CURRENT EDITION OF AHRI STANDARD 410.
- STANDARD COILS SUPPLIED WITH 10 FINNS PER INCH.
- IT IS NOT RECOMMENDED TO FIELD FLIP 3 & 4 ROW COILS. INDICATE HANDING WHILE ORDERING.
- 0.0045" (0.11) ALUMINUM FINNS.
- 0.0160" (0.41) COPPER TUBE WALL THICKNESS.

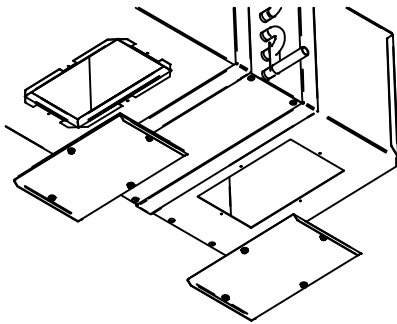
COIL OPTION:

- HIGH CAPACITY 1 & 2 ROW WATER COIL SUPPLIED WITH 12 FINNS PER INCH (HC)

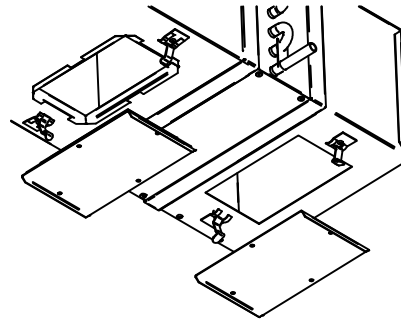


ALL METRIC DIMENSIONS () ARE SOFT CONVERTED. IMPERIAL DIMENSIONS ARE CONVERTED TO METRIC AND ROUNDED TO THE NEAREST MILLIMETER.

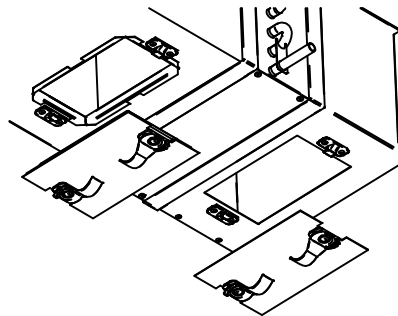
PROJECT:		PRICE	SDVLP SINGLE DUCT TERMINAL VARIABLE VOLUME LOW PROFILE WATER COIL
ENGINEER:			
CUSTOMER:		274050	
SUBMITTAL DATE:	SPEC. SYMBOL:	06/06/2022	



ADD - DUAL ACCESS DOOR WITH SCREWS



ADDL - DUAL ACCESS DOOR WITH SNAP LATCHES



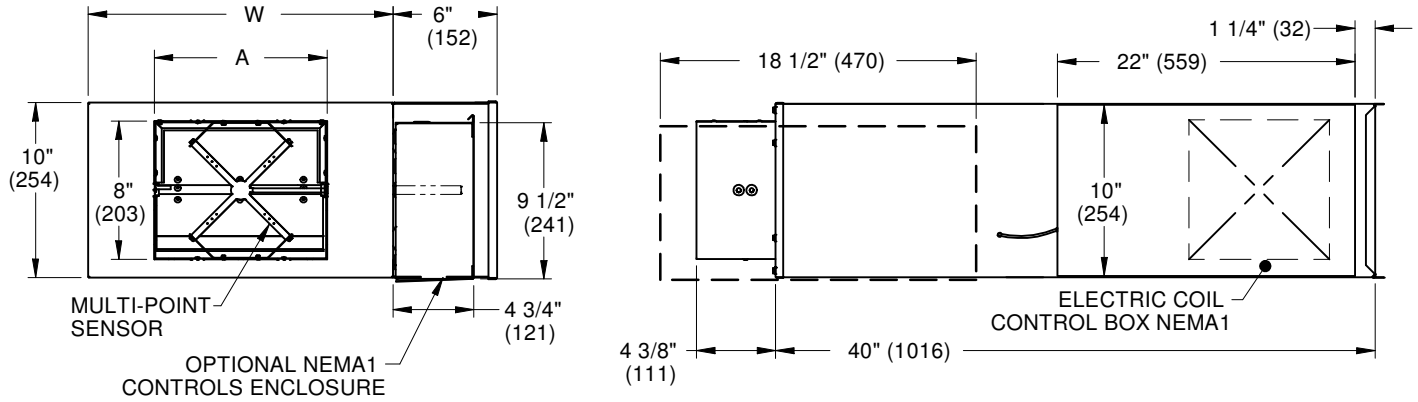
ADDQ - DUAL ACCESS DOOR WITH QUARTER TURN LATCHES

CONSTRUCTION NOTES:

- INSULATED UPSTREAM ACCESS.
- UNINSULATED DOWNSTREAM ACCESS SECTION.
- STANDARD DOOR SIZES PROVIDED AT 4" (102) X 6 3/4" (171).
- BOTTOM ACCESS DOORS FOR INSPECTION AND MAINTENANCE OF COIL.
- GASKETED PERIMETER INCLUDED WITH ALL FASTENER STYLES.
- INSULATED, 22 GAUGE GALVANIZED DUAL WALL ACCESS DOOR.
(NON-DUAL WALL WITH FIBER FREE)

ALL METRIC DIMENSIONS () ARE SOFT CONVERTED. IMPERIAL DIMENSIONS ARE CONVERTED TO METRIC AND ROUNDED TO THE NEAREST MILLIMETER.

PROJECT:		PRICE [®]	
ENGINEER:		GH	SDVLP SINGLE DUCT TERMINAL VARIABLE VOLUME LOW PROFILE WATER COIL ACCESS
CUSTOMER:		274050	
SUBMITTAL DATE:	SPEC. SYMBOL:	06/06/2022	



UNIT SIZE	W	A
9	17 1/2 (445)	10 (254)
10		12 (305)
12	24 (610)	16 (406)
14	30 (762)	21 (533)
16	38 (965)	29 (737)



STANDARD CONSTRUCTION:

- ASSEMBLY ETL CERTIFIED TO UL1995 & CSA236.
- MULTI-POINT, CENTER AVERAGING AIRFLOW SENSOR.
- 1/2" (13mm) THICK INTERNAL FIBERGLASS INSULATION WHICH MEETS REQUIREMENTS OF NFPA 90A AND UL181.
- 22 GAUGE GALVANIZED STEEL HOUSING & 20 GAUGE HEATER. MECHANICALLY SEALED LEAK RESISTANT CONSTRUCTION.
- RECTANGULAR DISCHARGE OPENING WITH SLIP AND DRIVE CLEAT DUCT CONNECTION.
- 1/2" (13mm) GALVANIZED DAMPER SHAFT WITH POSITION INDICATOR.
- REFER TO SUBMITTED CONTROL DIAGRAMS FOR STANDARD CONTROL COMPONENTS TO BE SUPPLIED.
- LOW WATT DENSITY ELEMENTS, HIGH GRADE NICKEL-CHROME ALLOY.
- SCR CONTROLS OVER 25 AMPS ϕ USE A 19" TALL CONTROL BOX.
- AUTOMATIC & MANUAL RESET THERMAL CUTOUT.
- MAGNETIC CONTACTORS.
- AIR FLOW SWITCH.
- 24VAC/50VAC CLASS 2 TRANSFORMER.
- HINGED ACCESS DOOR.
- SINGLE POINT ELECTRICAL CONNECTION.
- RIGHT HAND UNIT SHOWN (CRH) LEFT HAND AVAILABLE.

CONTROLS OPTIONS:

- FIELD MOUNTED CONTROLS, SUPPLIED BY OTHERS (FLD)
- FACTORY MOUNTED DIGITAL CONTROLS, SUPPLIED BY OTHERS (FAC)

CONTROLS SUPPLIED AND MOUNTED BY PRICE (EHP):

- DIGITAL CONTROLS (DIG)
- PNEUMATIC CONTROLS (PNEU)

UNIT & COIL OPTIONS:

- NEMA1 CONTROLS ENCLOSURE (PS)
- 20 GAUGE CASING (20GA)
- HANGER BRACKETS (HB)
- BRASS AIRFLOW SENSOR GAUGE TAPS (GT)
- CONTROL CIRCUIT FUSES (CCF)
- DOOR INTERLOCK DISCONNECT SWITCH (IDSW)
- MERCURY CONTACTORS (MC)
- MAIN SUPPLY FUSES (FUS)
- HEATER SECTION INSULATED (INSUL)
(N/A WITH FIBER-FREE)

SCR CONTROL INPUT:

- 0 TO 10 VDC CONTROL SIGNAL (SCRV)
- 4 TO 20 MA CONTROL SIGNAL (SCRA)
- 24 VAC PULSE CONTROL SIGNAL (SCRPWM)
- DISCHARGE AIR TEMPERATURE CONTROL (DAT)

LINER OPTIONS:

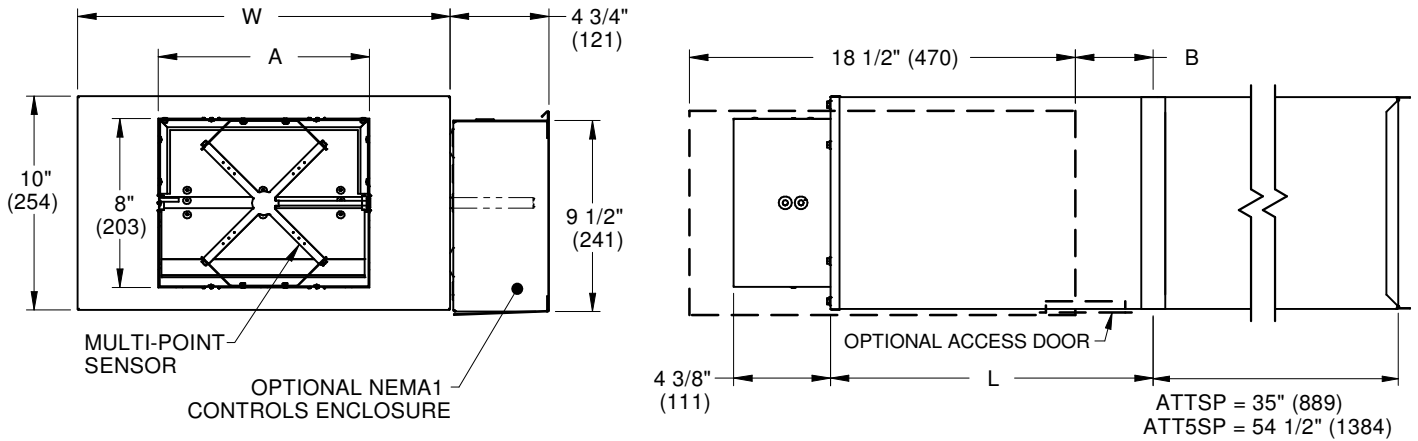
- FIBER FREE FOAM 1/2" (13mm) (FF50)
- FOIL FACED FIBERGLASS BOARD 5/8" (16mm) (FB)
- SOLID METAL WITH FG50 (SM50)
- CLEANROOM ANGLES WITH FB (CRAF)
- PERFORATED METAL WITH FB (AFPM)

SUPPLY VOLTAGE:

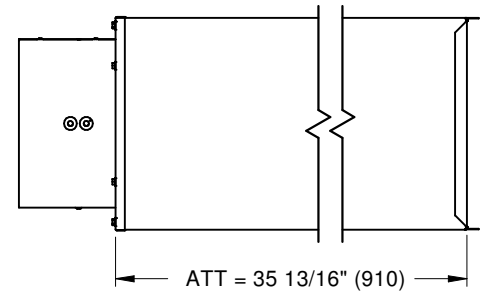
- 120/1 ϕ
- 208/1 ϕ (2 WIRE)
- 208/3 ϕ (3 WIRE)
- 240/1 ϕ
- 277/1 ϕ
- 347/1 ϕ
- 480/1 ϕ
- 480/3 ϕ (3 WIRE)
- 600/3 ϕ (3 OR 4 WIRE)

ALL METRIC DIMENSIONS () ARE SOFT CONVERTED. IMPERIAL DIMENSIONS ARE CONVERTED TO METRIC AND ROUNDED TO THE NEAREST MILLIMETER.

PROJECT:		PRICE
ENGINEER:		
CUSTOMER:		GH
SUBMITTAL DATE:		274051
SPEC. SYMBOL:		06/22/2023
SDVLP SINGLE DUCT TERMINAL VARIABLE VOLUME LOW PROFILE ELECTRIC COIL		



UNIT SIZE	L	W	A	B
9	15 1/2 (394)	17 1/2 (445)	10 (254)	3 13/16 (97)
10			12 (305)	
12			16 (406)	
14	19 (483)	30 (762)	21 (533)	5 5/16 (135)
16			29 (737)	



STANDARD CONSTRUCTION:

- 1/2" (13mm) THICK INTERNAL FIBERGLASS INSULATION WHICH MEETS REQUIREMENTS OF NFPA 90A AND UL181.
- 22 GAUGE GALVANIZED STEEL HOUSING. MECHANICALLY SEALED, LEAK RESISTANT CONSTRUCTION.
- RECTANGULAR DISCHARGE OPENING WITH SLIP AND DRIVE CLEAT DUCT CONNECTION.
- MULTI-POINT, CENTER AVERAGING AIRFLOW SENSOR.
- 1/2" (13mm) GALVANIZED DAMPER SHAFT WITH POSITION INDICATOR.
- RIGHT HAND UNIT SHOWN (CRH), LEFT HAND AVAILABLE.

CONTROLS OPTIONS:

- FIELD MOUNTED CONTROLS, SUPPLIED BY OTHERS (FLD)
- FACTORY MOUNTED DIGITAL CONTROLS, SUPPLIED BY OTHERS (FAC)

CONTROLS SUPPLIED AND MOUNTED BY PRICE (EHP):

- DIGITAL CONTROLS (DIG)
- PNEUMATIC CONTROLS (PNEU)

UNIT OPTIONS:

- NEMA1 CONTROLS ENCLOSURE (PS)
- DISCONNECT SWITCH (DSW)
- 20 GAUGE CASING (20GA)
- HANGER BRACKETS (HB)
- BRASS AIRFLOW SENSOR GAUGE TAPS (GT)

BOTTOM ACCESS DOOR:

- ACCESS DOOR WITH SCREWS (AD)
- ACCESS DOOR WITH SNAP LATCHES (ADL)
- ACCESS DOOR WITH QUARTER TURN LATCHES (ADQ)

LINER OPTIONS:

- FIBER FREE FOAM 1" (25mm) (FF1)
- FOIL FACED FIBERGLASS BOARD 1" (16mm) (FB1)
- SOLID METAL WITH FG1 (SM1)
- CLEANROOM ANGLES WITH FB (CRAF1)
- PERFORATED METAL WITH FB (AFPM1)



ALL METRIC DIMENSIONS () ARE SOFT CONVERTED. IMPERIAL DIMENSIONS ARE CONVERTED TO METRIC AND ROUNDED TO THE NEAREST MILLIMETER.

PROJECT:		PRICE	SDVLP
ENGINEER:			
CUSTOMER:		274052	
SUBMITTAL DATE:	SPEC. SYMBOL:	06/03/2024	

ACCESS DOOR FRAME
(NOT PROVIDED FOR FF LINERS)

2 1/2" (64)

GASKET

FG1 OR FF1 INSULATION

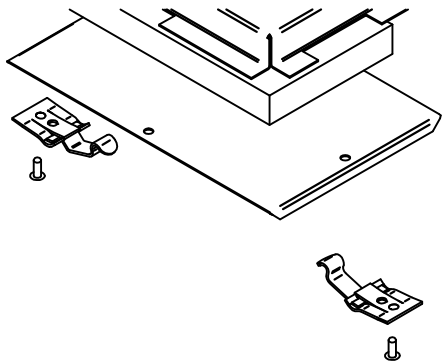
SCREW FASTENER

HOUSING

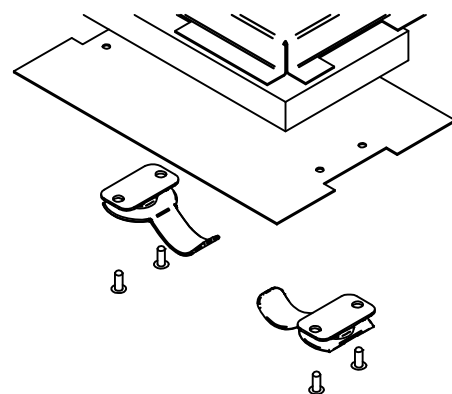
DUAL WALL
(NOT PROVIDED FOR FF LINERS)

ACCESS DOOR PANEL

AD - ACCESS DOOR WITH SCREWS



ADL - ACCESS DOOR WITH SNAP LATCHES



ADQ - ACCESS DOOR WITH QUARTER TURN LATCHES

STANDARD CONSTRUCTION:

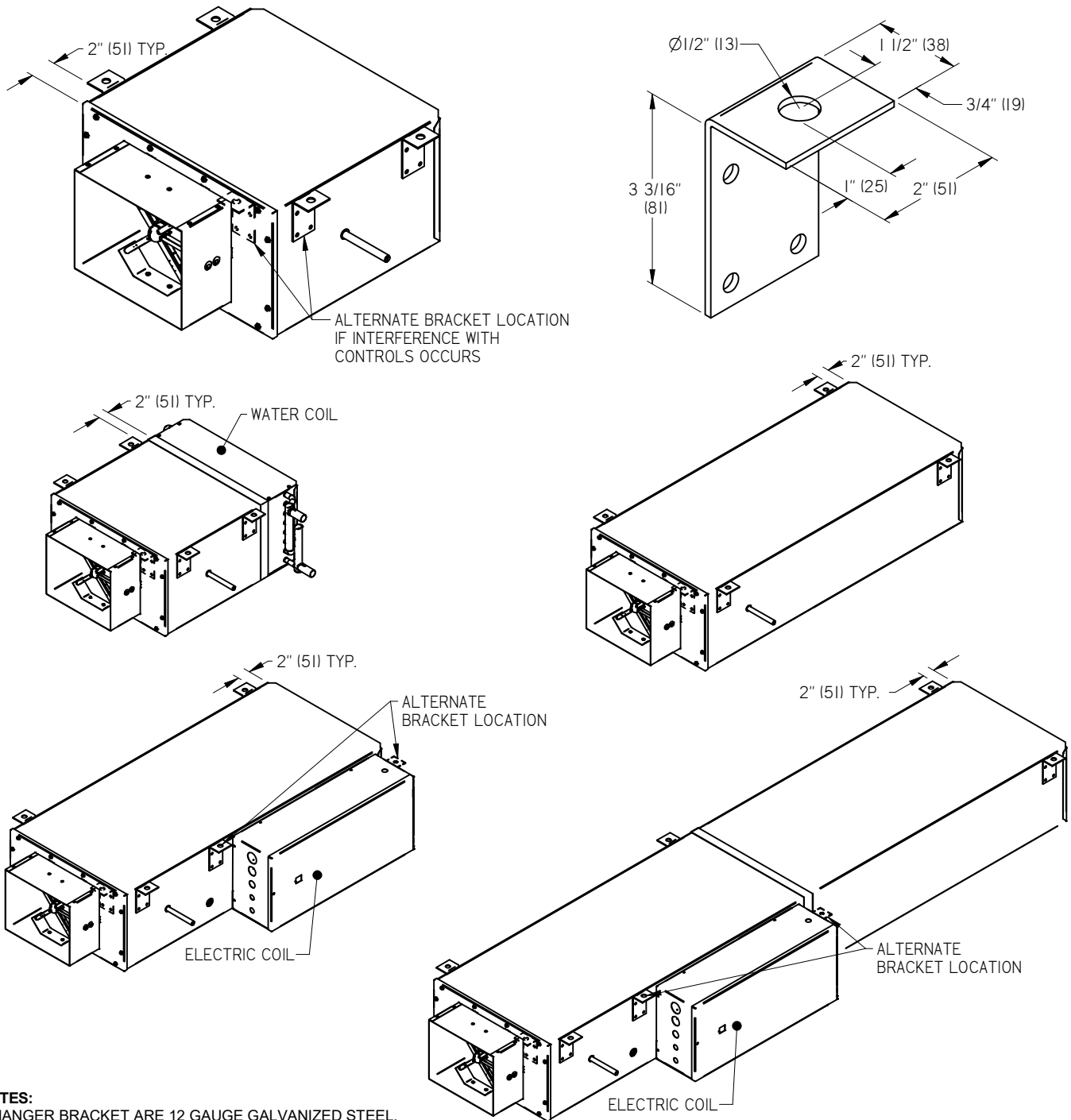
- ACCESS DOOR OPENING IS 4" (102) X 6 3/4"(171).
- BOTTOM ACCESS DOOR FOR INSPECTION AND MAINTENANCE OF COIL.
- DUAL WALL CONSTRUCTION (NOT PROVIDED FOR FF LINERS).
- GASKETED PERIMETER FOR ALL FASTENER TYPES.

ACCESS DOOR OPTIONS:

- SCREWS (AD)
- SNAP LATCHES (ADL)
- QUARTER TURN LATCHES (ADQ)
- TOP & BOTTOM ACCESS DOORS (TB)

ALL METRIC DIMENSIONS () ARE SOFT CONVERTED. IMPERIAL DIMENSIONS ARE CONVERTED TO METRIC AND ROUNDED TO THE NEAREST MILLIMETER.

PROJECT:		PRICE [®]	
ENGINEER:		GH	SDVLP SINGLE DUCT TERMINAL VARIABLE VOLUME LOW PROFILE ACCESS DOOR
CUSTOMER:		274053	
SUBMITTAL DATE:	SPEC. SYMBOL:	06/06/2022	



- NOTES:**
- HANGER BRACKET ARE 12 GAUGE GALVANIZED STEEL.
 - 4 BRACKETS PER UNIT. 2 BRACKETS PER ATTENUATOR.
 - LAYOUT INDICATES SUGGESTED HANGER BRACKET LOCATIONS.
 - BRACKETS SHIPPED LOOSE FOR FIELD INSTALLATION FOR USE WITH FASTENERS AND THREADED HANGER RODS OR EQUIVALENT (BY OTHERS).

ALL METRIC DIMENSIONS () ARE SOFT CONVERTED. IMPERIAL DIMENSIONS ARE CONVERTED TO METRIC AND ROUNDED TO THE NEAREST MILLIMETER.

PROJECT:		PRICE [®]	SDVLP
ENGINEER:			
CUSTOMER:		274054	
SUBMITTAL DATE:	SPEC. SYMBOL:	06/06/2022	