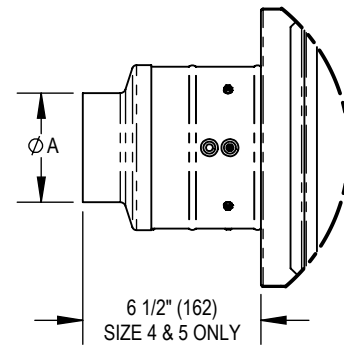


UNIT SIZE	WIDTH	HEIGHT	INLET	OUTLET
	W	H	A	B
4	12 (305)	10 (254)	3 7/8 (98)	7 7/8 (200)
5			4 7/8 (124)	
6			5 7/8 (149)	
8	14 (356)	12 1/2 (318)	7 7/8 (200)	9 7/8 (251)
10	16 (406)	15 (381)	9 7/8 (251)	11 7/8 (406)
12	20 (508)	17 1/2 (445)	11 7/8 (406)	13 7/8 (508)
14	24 (610)	18 (457)	13 7/8 (508)	15 7/8 (403)



STANDARD CONSTRUCTION:

- 1" (25mm) THICK INTERNAL FIBERGLASS INSULATION WHICH MEETS REQUIREMENTS OF NFPA 90A AND UL181.
- 22 GAUGE GALVANIZED STEEL HOUSING. MECHANICALLY SEALED, LEAK RESISTANT CONSTRUCTION.
- RECTANGULAR DISCHARGE OPENING WITH SLIP AND DRIVE CLEAT DUCT CONNECTION.
- MULTI-POINT, CENTER AVERAGING AIRFLOW SENSOR.
- 1/2" (13mm) GALVANIZED DAMPER SHAFT WITH POSITION INDICATOR.
- RIGHT HAND UNIT SHOWN (CRH), LEFT HAND (CLH) AVAILABLE.

CONTROLS OPTIONS:

- FIELD MOUNTED CONTROLS, SUPPLIED BY OTHERS (FLD)
- FACTORY MOUNTED DIGITAL CONTROLS, SUPPLIED BY OTHERS (FAC)
- FACTORY MOUNTED DIGITAL CONTROLS, SUPPLIED BY PRICE (EHPD)

UNIT OPTIONS:

- NEMA1 CONTROLS ENCLOSURE (PS)
- DISCONNECT SWITCH (DSW)
- 20 GAUGE CASING (20GA)
- HANGER BRACKETS (HB)
- BOTTOM REMOVABLE SENSOR (RS)
- ORIFICE RING SENSOR (ORF)
- BRASS AIRFLOW SENSOR GAUGE TAPS (GT)


BOTTOM ACCESS DOOR OPTIONS:

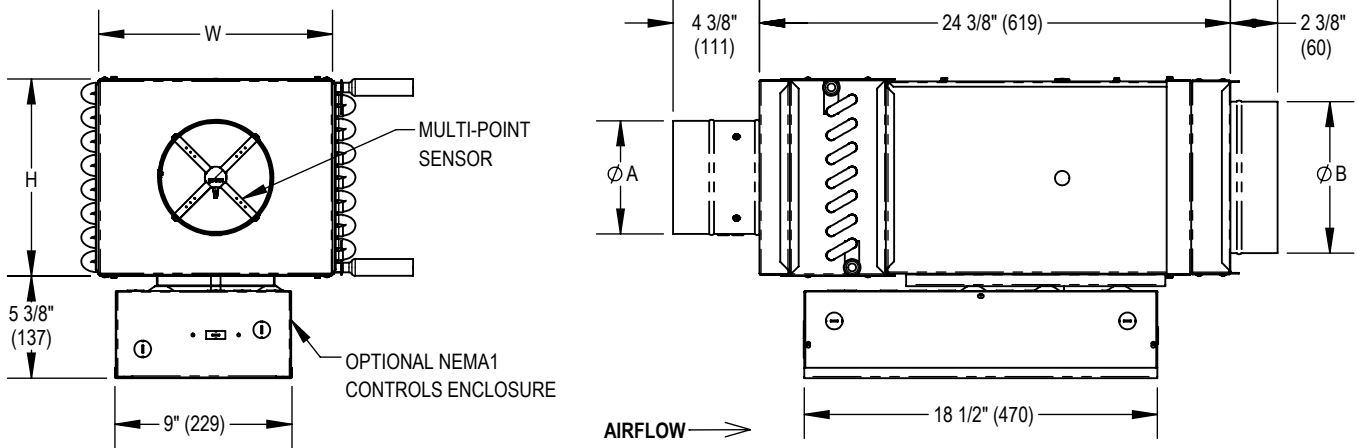
- ACCESS DOOR WITH SCREWS (AD)
- ACCESS DOOR WITH QUARTER TURN LATCHES (ADQ)

LINER OPTIONS:

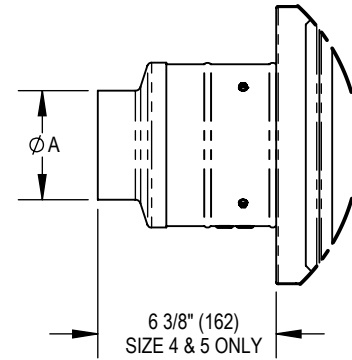
- FIBER FREE FOAM 1" (25mm) (FF1)
- CLEANROOM ANGLES WITH FB1 (CRAF1)
- CLEANROOM ANGLES (CA) WITH FG1 OR FF1

ALL METRIC DIMENSIONS [] ARE SOFT CONVERTED. IMPERIAL DIMENSIONS ARE CONVERTED TO METRIC AND ROUNDED TO THE NEAREST MILLIMETER.

PROJECT:			
ENGINEER:			
CUSTOMER:		DRAWING NO: 277666	SDV-VANTAGE SINGLE DUCT TERMINAL VARIABLE VOLUME OVERSIZE
SUBMITTAL DATE:	SPEC. SYMBOL:	DATE DRAWN: 2025-05-02	



UNIT SIZE	WIDTH	HEIGHT	INLET	OUTLET
	W	H	A	B
4	12 (305)	10 (254)	3 7/8 (98)	7 7/8 (200)
5			4 7/8 (124)	
6			5 7/8 (149)	
8	14 (356)	12 1/2 (318)	7 7/8 (200)	9 7/8 (251)
10	16 (406)	15 (381)	9 7/8 (251)	11 7/8 (406)
12	20 (508)	17 1/2 (445)	11 7/8 (406)	13 7/8 (508)
14	24 (610)	18 (457)	13 7/8 (508)	15 7/8 (403)



STANDARD CONSTRUCTION:

- 1" (25mm) THICK INTERNAL FIBERGLASS INSULATION WHICH MEETS REQUIREMENTS OF NFPA 90A AND UL181.
- 22 GAUGE GALVANIZED STEEL HOUSING. MECHANICALLY SEALED, LEAK RESISTANT CONSTRUCTION.
- RECTANGULAR DISCHARGE OPENING WITH SLIP AND DRIVE CLEAT DUCT CONNECTION.
- MULTI-POINT, CENTER AVERAGING AIRFLOW SENSOR.
- 1/2" (13mm) GALVANIZED DAMPER SHAFT WITH POSITION INDICATOR.
- RIGHT HAND HOT WATER COILS SHOWN, LEFT HAND HOT WATER COILS AVAILABLE.

CONTROLS OPTIONS:

- FIELD MOUNTED CONTROLS, SUPPLIED BY OTHERS (FLD)
- FACTORY MOUNTED DIGITAL CONTROLS, SUPPLIED BY OTHERS (FAC)
- FACTORY MOUNTED DIGITAL CONTROLS, SUPPLIED BY PRICE (EHPD)
- FACTORY MOUNTED PNEUMATIC CONTROLS, SUPPLIED BY PRICE (EHPP)

UNIT OPTIONS:

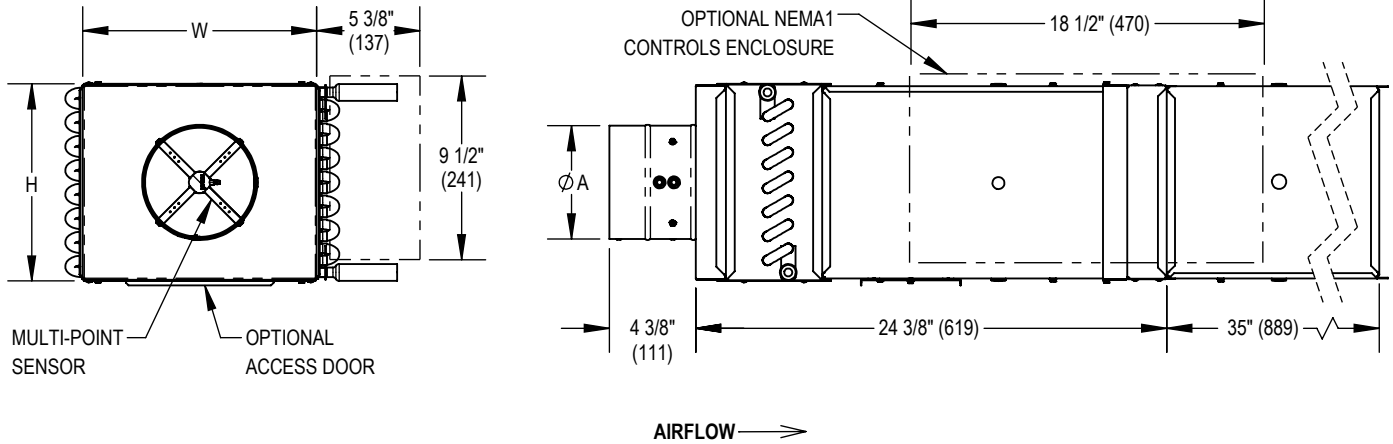
- NEMA1 CONTROLS ENCLOSURE (PS)
- DISCONNECT SWITCH (DSW)
- 20 GAUGE CASING (20GA)
- HANGER BRACKETS (HB)
- BOTTOM REMOVABLE SENSOR (RS)
- ORIFICE RING SENSOR (ORF)
- BRASS AIRFLOW SENSOR GAUGE TAPS (GT)

LINER OPTIONS:

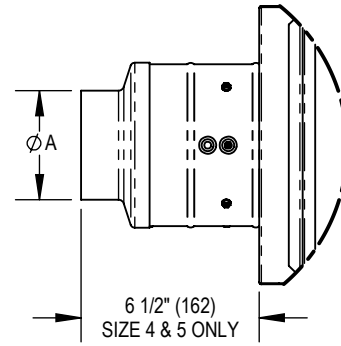
- FIBER FREE FOAM 1" (25mm) (FF1)
- CLEANROOM ANGLES WITH FB1 (CRAF1)
- CLEANROOM ANGLES (CA) WITH FG1 OR FF1

ALL METRIC DIMENSIONS [] ARE SOFT CONVERTED. IMPERIAL DIMENSIONS ARE CONVERTED TO METRIC AND ROUNDED TO THE NEAREST MILLIMETER.

PROJECT:		price [®]	
ENGINEER:		APPROVED BY: G	SDV-VANTAGE SINGLE DUCT TERMINAL VARIABLE VOLUME OVERSIZE CONTROLS BOTTOM (CB)
CUSTOMER:		DRAWING NO: 277667	
SUBMITTAL DATE:	SPEC. SYMBOL:	DATE DRAWN: 2025-05-02	



UNIT SIZE	WIDTH	HEIGHT	INLET
	W	H	A
4	12 (305)	10 (254)	3 7/8 (98)
5			4 7/8 (124)
6			5 7/8 (149)
8	14 (356)	12 1/2 (318)	7 7/8 (200)
10	16 (406)	15 (381)	9 7/8 (251)
12	20 (508)	17 1/2 (445)	11 7/8 (406)
14	24 (610)	18 (457)	13 7/8 (508)



STANDARD CONSTRUCTION:

- 1" (25mm) THICK INTERNAL FIBERGLASS INSULATION WHICH MEETS REQUIREMENTS OF NFPA 90A AND UL181.
- 22 GAUGE GALVANIZED STEEL HOUSING. MECHANICALLY SEALED, LEAK RESISTANT CONSTRUCTION.
- RECTANGULAR DISCHARGE OPENING WITH SLIP AND DRIVE CLEAT DUCT CONNECTION.
- MULTI-POINT, CENTER AVERAGING AIRFLOW SENSOR.
- 1/2" (13mm) GALVANIZED DAMPER SHAFT WITH POSITION INDICATOR.
- RIGHT HAND UNIT SHOWN (CRH), LEFT HAND (CLH) AVAILABLE.

CONTROLS OPTIONS:

- FIELD MOUNTED CONTROLS, SUPPLIED BY OTHERS (FLD)
- FACTORY MOUNTED DIGITAL CONTROLS, SUPPLIED BY OTHERS (FAC)
- FACTORY MOUNTED DIGITAL CONTROLS, SUPPLIED BY PRICE (EHPD)

UNIT OPTIONS:

- NEMA1 CONTROLS ENCLOSURE (PS)
- DISCONNECT SWITCH (DSW)
- 20 GAUGE CASING (20GA)
- HANGER BRACKETS (HB)
- BOTTOM REMOVABLE SENSOR (RS)
- ORIFICE RING SENSOR (ORF)
- BRASS AIRFLOW SENSOR GAUGE TAPS (GT)

BOTTOM ACCESS DOOR OPTIONS:

- ACCESS DOOR WITH SCREWS (AD)
- ACCESS DOOR WITH QUARTER TURN LATCHES (ADQ)

LINER OPTIONS:

- FIBER FREE FOAM 1" (25mm) (FF1)
- CLEANROOM ANGLES WITH FB1 (CRAF1)
- CLEANROOM ANGLES (CA) WITH FG1 OR FF1

ALL METRIC DIMENSIONS [] ARE SOFT CONVERTED. IMPERIAL DIMENSIONS ARE CONVERTED TO METRIC AND ROUNDED TO THE NEAREST MILLIMETER.

PROJECT:		price [®]	
ENGINEER:			
CUSTOMER:		DRAWING NO: 278251	SDV-VANTAGE SINGLE DUCT TERMINAL VARIABLE VOLUME OVERSIZE SEPARATE ATTENUATOR
SUBMITTAL DATE:	SPEC. SYMBOL:	DATE DRAWN: 2025-04-28	