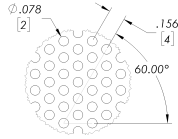


RADIANT PANEL MODULAR

Face Style:

- SF - Solid Face (Default)
- PERF - Perforated Face



Perforation Detail

Material:

- STL20 - Satin-coat Steel 20G-0.04" (Default)
- ALM14 - Aluminum 14G-0.06" (available for 'PERF' only)
- ALM18 - Aluminum 18G-0.04" (available for 'SF' only)
- Other: _____

Finish:

- WT - RAL 9003 - White (Default)
- BT - RAL 9005 - Black
- B25 - Custom Color Match: _____

Coil Layout: (see page 3)

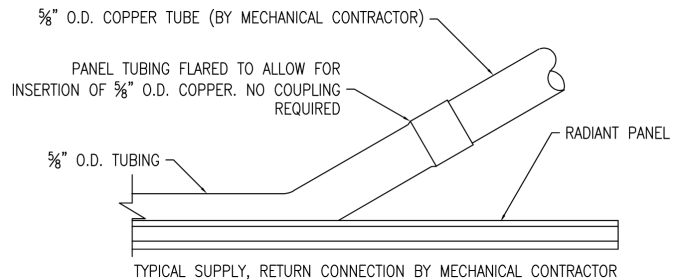
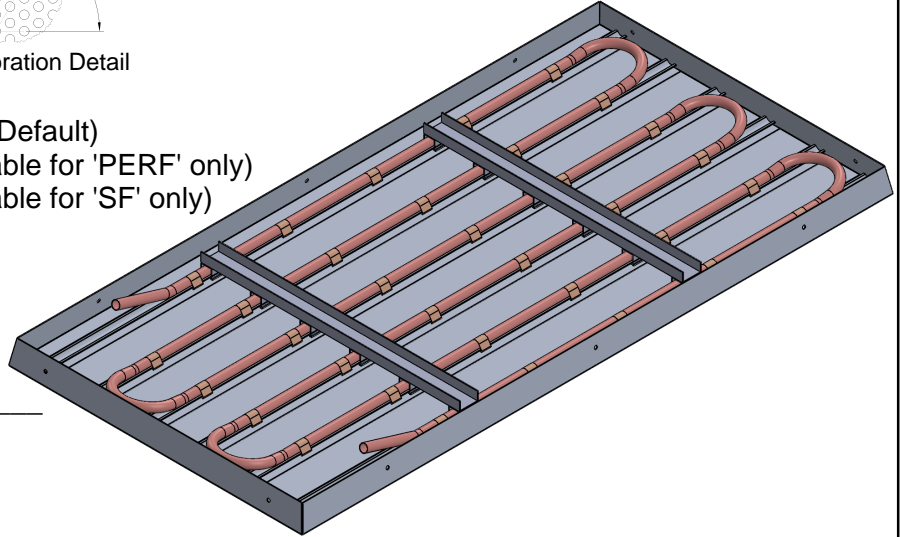
- CL1 - Same Side (Default)
- CL2 - Left Hand
- CL3 - Right Hand
- NC - No Coil

Coil Connections:

- FLR - Sweat 1/2" Flared (Default)
- STR - Sweat 1/2" Straight
- NPSH0.5 - Male NPSH 1/2"
- BRASS - 1/2" Push Connect with Brass Inserts
- Other: _____

Insulation:

- INS1 - 1 inch FSK 0.75 PCF (Default)
- INS2 - 2 inch FSK 0.75 PCF
- None



FLR- Flared Connection Detail

NOMINAL LENGTH	24"	30"	36"	42"	48"	54"	60"	66"	72"	78"	84"	90"	96"	102"	108"	114"	120"
NOMINAL WIDTH	24"	30"	36"	42"	48"												

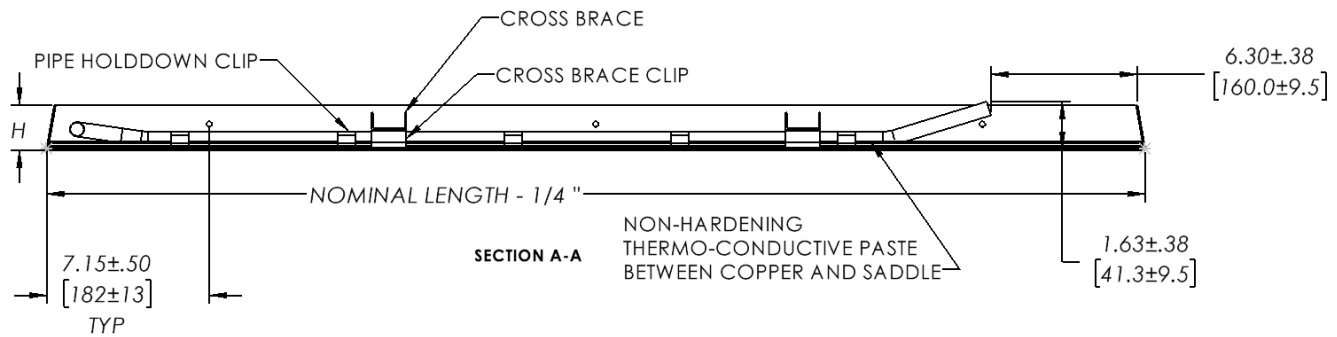
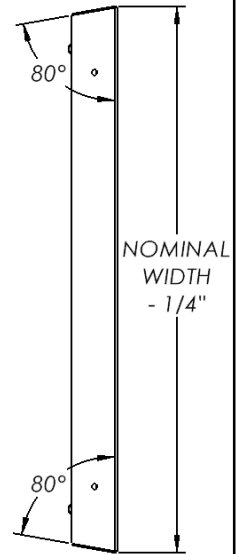
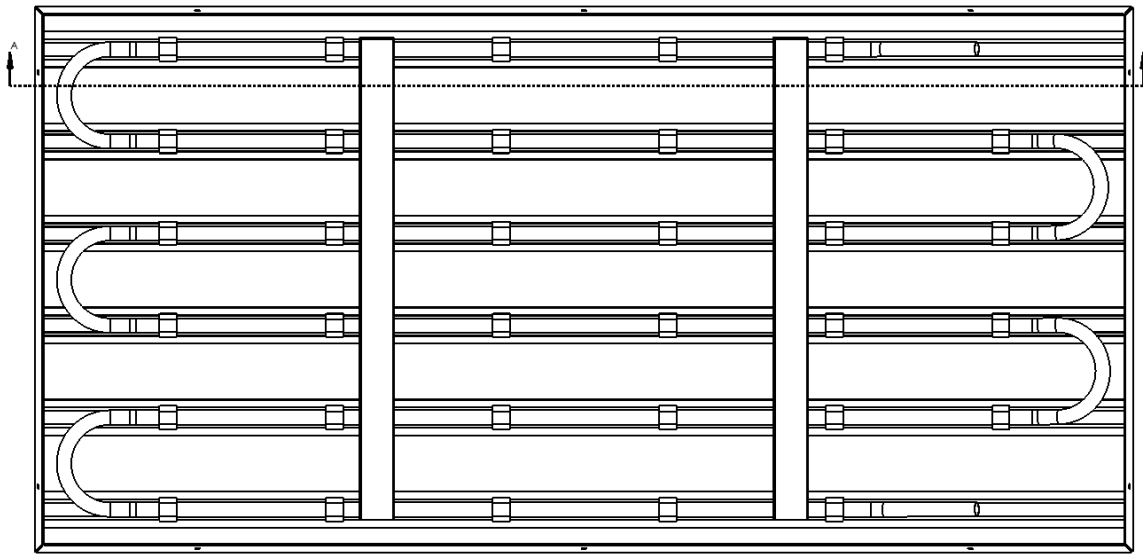
All Panels with Width over 24" will come with factory attached cross braces to ensure no sagging across the face

Finish note: Heat-inhibited polyester powder paint, no silver or metallic finishes permitted.

TOLERANCE UNLESS OTHERWISE SPECIFIED: ± 1/16"

PROJECT:		PRICE[®]	
ENGINEER:		274902	RPM RADIANT PANEL MODULAR
CUSTOMER:		FRENGER,	
SUBMITTAL DATE:	SPEC. SYMBOL:	2024/9/23	

RADIANT PANEL MODULAR



DIMENSION H [HEIGHT] IS BASED ON INSULATION THICKNESS. H = INSULATION THICKNESS + 1"

TOLERANCE UNLESS OTHERWISE SPECIFIED: $\pm 1/16"$

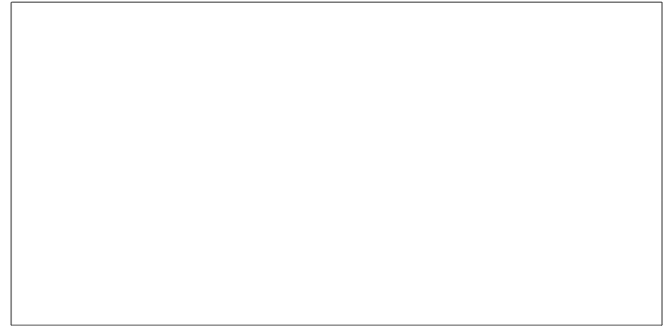
PROJECT:		price®	
ENGINEER:		274902	RPM RADIANT PANEL MODULAR
CUSTOMER:		FRENGER,	
SUBMITTAL DATE:	SPEC. SYMBOL:	2024/9/23	

RADIANT PANEL MODULAR

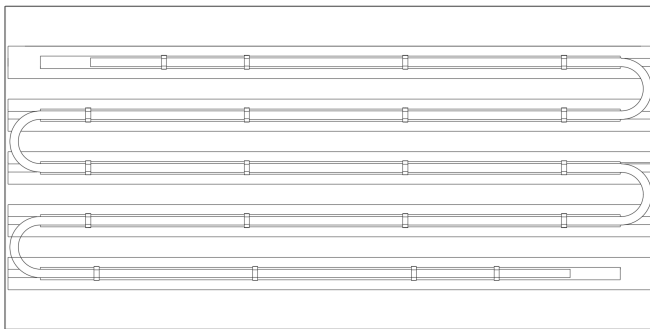
24" Wide Coil Layout Shown:



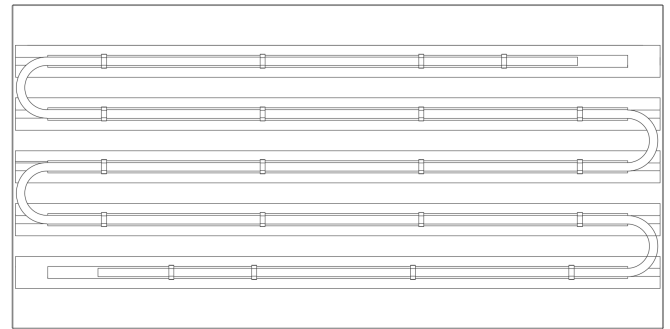
[CL1] Same Side 4inch coil spacing



[NC] No Coil*



[CL2] Left Hand 4inch coil spacing



[CL3] Right hand 4 inch coil spacing

NC*: Panels greater than 24" wide may have saddles attached to secure cross braces.

TOLERANCE UNLESS OTHERWISE SPECIFIED: $\pm 1/16"$

PROJECT:		PRICE[®]	
ENGINEER:		274902	RPM RADIANT PANEL MODULAR
CUSTOMER:		FRENGER,	
SUBMITTAL DATE:	SPEC. SYMBOL:	2024/9/23	