

MANUAL – INSTALLATION

Acoustic Panel Enclosure

H-Channel Construction

Revision #: 01 – Issue Date: 10/16/14

© 2014 Price Industries Limited. All rights reserved.

PRICE[®]

ACOUSTIC PANEL ENCLOSURE

TABLE OF CONTENTS

Assembly Instructions

- Introduction 1
- Base Channel Layout 3
- Panels Installation 4
- Roof Panel Installation 5
- Doors Installation 6
- Door Latch for 4" Doors – Ventok #310 7
- Door Latch for 2" Doors – Ventok #260 8
- Flashing 9

Section Details

- Section A 10
- Section B 11
- Section C 11
- Section D 12
- Section E 12
- Section F 13
- Section G 13
- Section H 14
- Section I 14
- Section J 15
- Section K 15
- Section L 16
- Section M 16
- Section N 17

ACOUSTIC PANEL ENCLOSURE

ASSEMBLY INSTRUCTIONS

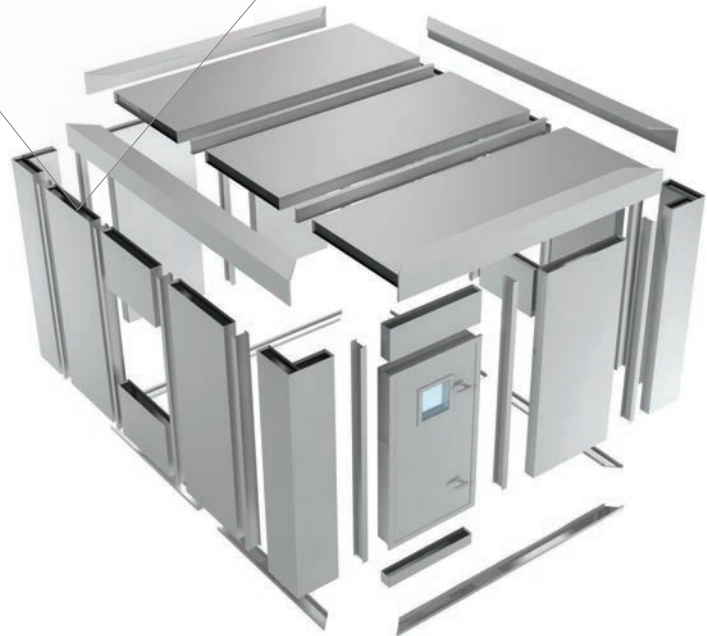
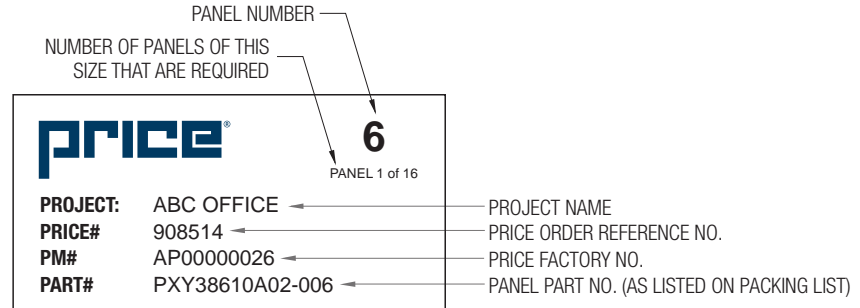
Introduction

These instructions are a general guide for the assembly of Price acoustic panel enclosures, to be used in conjunction with enclosure assembly drawings. Carefully read and understand these instructions prior to assembling the enclosure.

Please contact your Price representative for any questions or concerns regarding the assembly procedure.

- Custom features and/or details specific to your enclosure take precedence over this guideline.
- Sufficient quantities of self-drilling Tek screws and sealant are supplied with the enclosure.
- Sealants are to be applied and stored in accordance with manufacturer's instructions to ensure optimal performance.
- Check shipment upon arrival against bill of material. Notify your Price representative of any discrepancies.

PANEL LABEL BREAKDOWN ▼

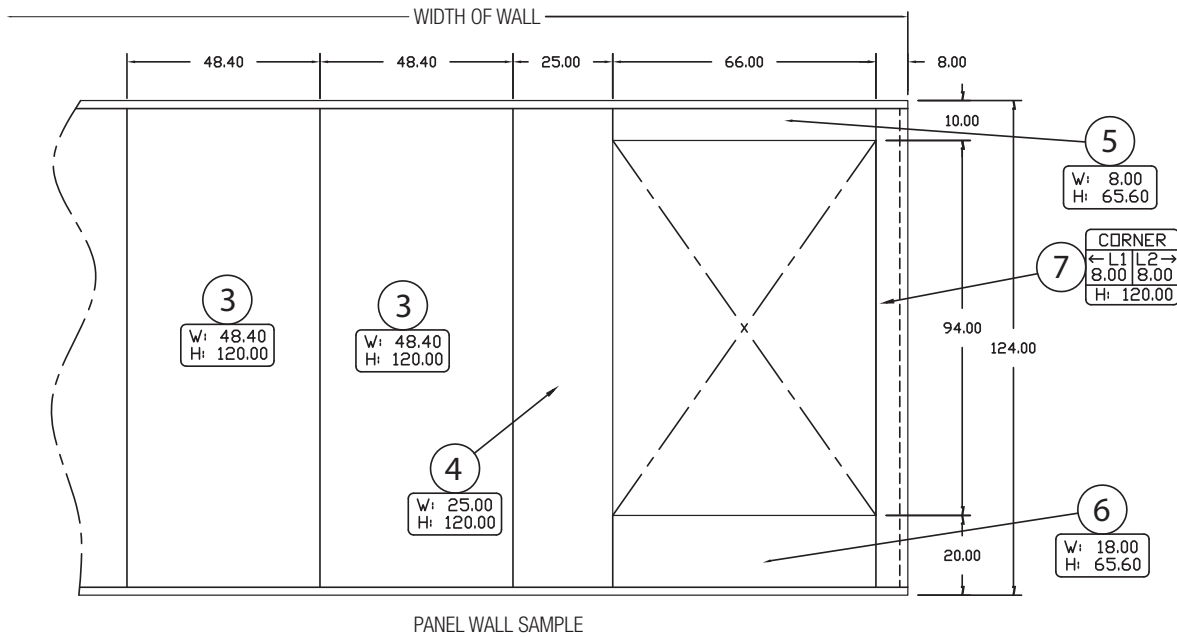


ACOUSTIC PANEL ENCLOSURE

ASSEMBLY INSTRUCTIONS

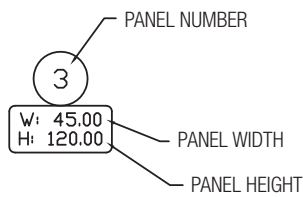
All Price panel enclosures and walls will be supplied with fully detailed assembly drawings. The assembly drawings will show exact placement and size of each panel required. The example below illustrates how panels are labeled and sized.

ASSEMBLY DRAWING EXAMPLE ▼

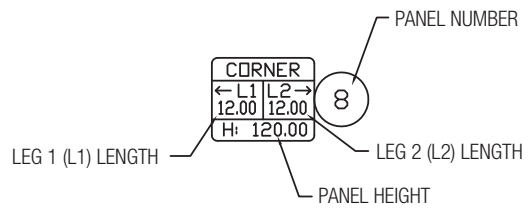


PANEL KEYS ▼

STANDARD PANEL KEY

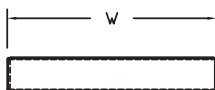


CORNER PANEL KEY

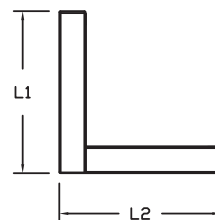


PANEL PROFILES ▼

H-CHANNEL PANEL PROFILE



CORNER PANEL PROFILE



ACOUSTIC PANEL ENCLOSURE

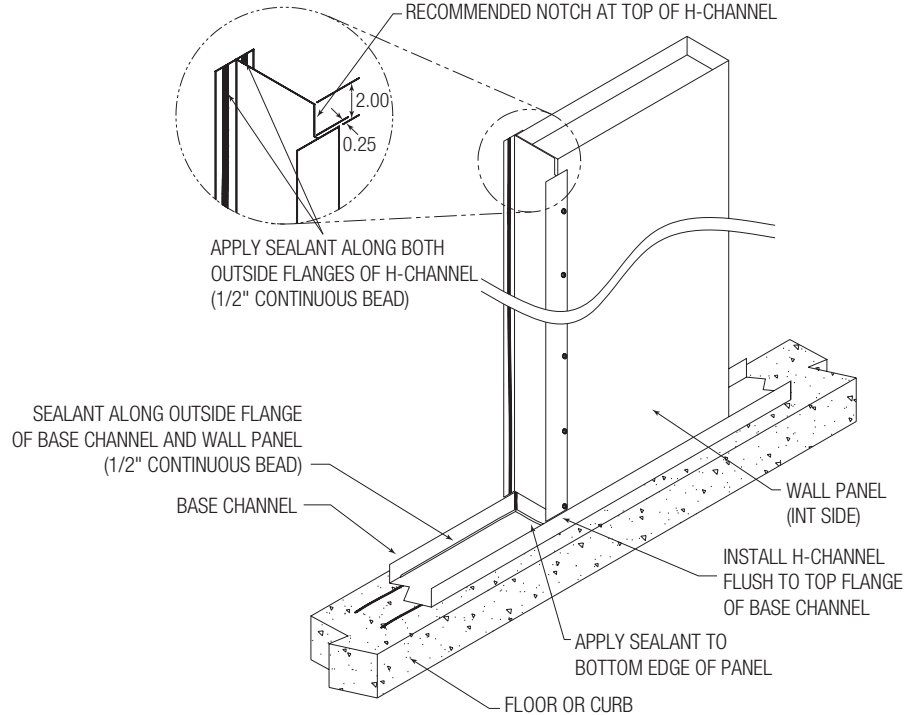
ASSEMBLY INSTRUCTIONS

Panels Installation

1. Using the enclosure assembly drawings, follow the wall panel sequence as indicated.
2. Apply a 1/2" continuous bead of sealant to the outer flange of the base channel.
3. All panels are individually marked to match numbers listed on the enclosure assembly drawing.
4. Lay the first panel in the base channel. Plumb the panel and Tek screw through the base channel at the centerline of the panel, interior and exterior. Cut H-channel to height required. Notch top end of H-channel as shown in detail.
5. Apply a generous bead of sealant to inside edge of both exterior flanges of H-channel. Place H-channel onto previously installed panel and Tek screw at bottom and top of panel.
6. Install the next panel in sequence.
Note: If necessary, carefully align panels into position by driving or hammering a piece of lumber placed against the panel. Do not damage panel edges.
7. Plumb the panel and install a Tek screw 3" from top of H-channel and 1" from bottom of H-channel to hold panel in position. Continue installing Tek screws along both exterior and interior flanges of H-channel (one every 12").
8. After installation of all wall panels is complete, Tek screw both sides of the base channel into the panels. Screws should be 12" on center.

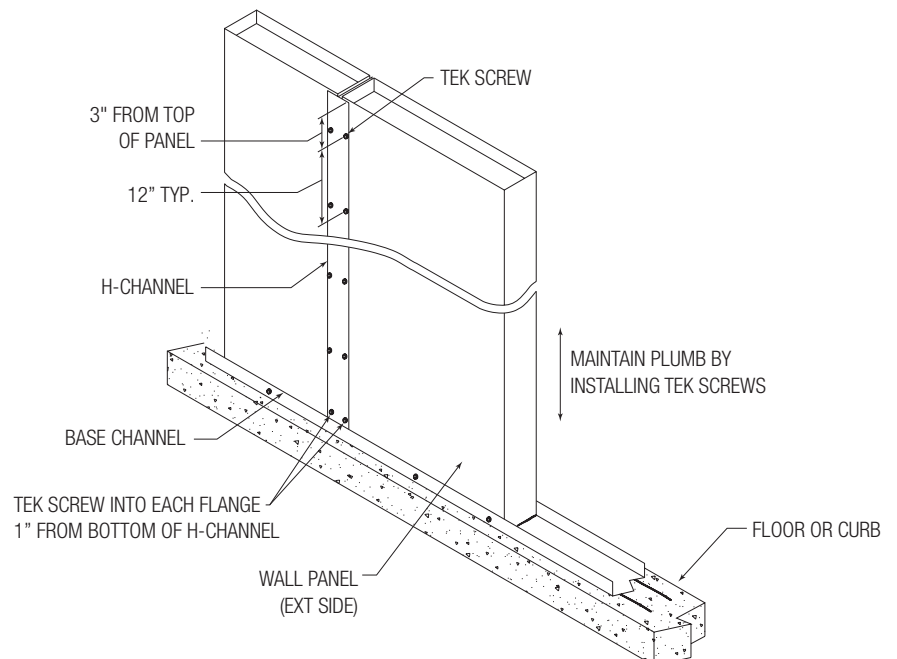
SEALANT APPLICATION ▼

EXTERIOR SIDE



SECURING PANELS ▼

EXTERIOR SIDE



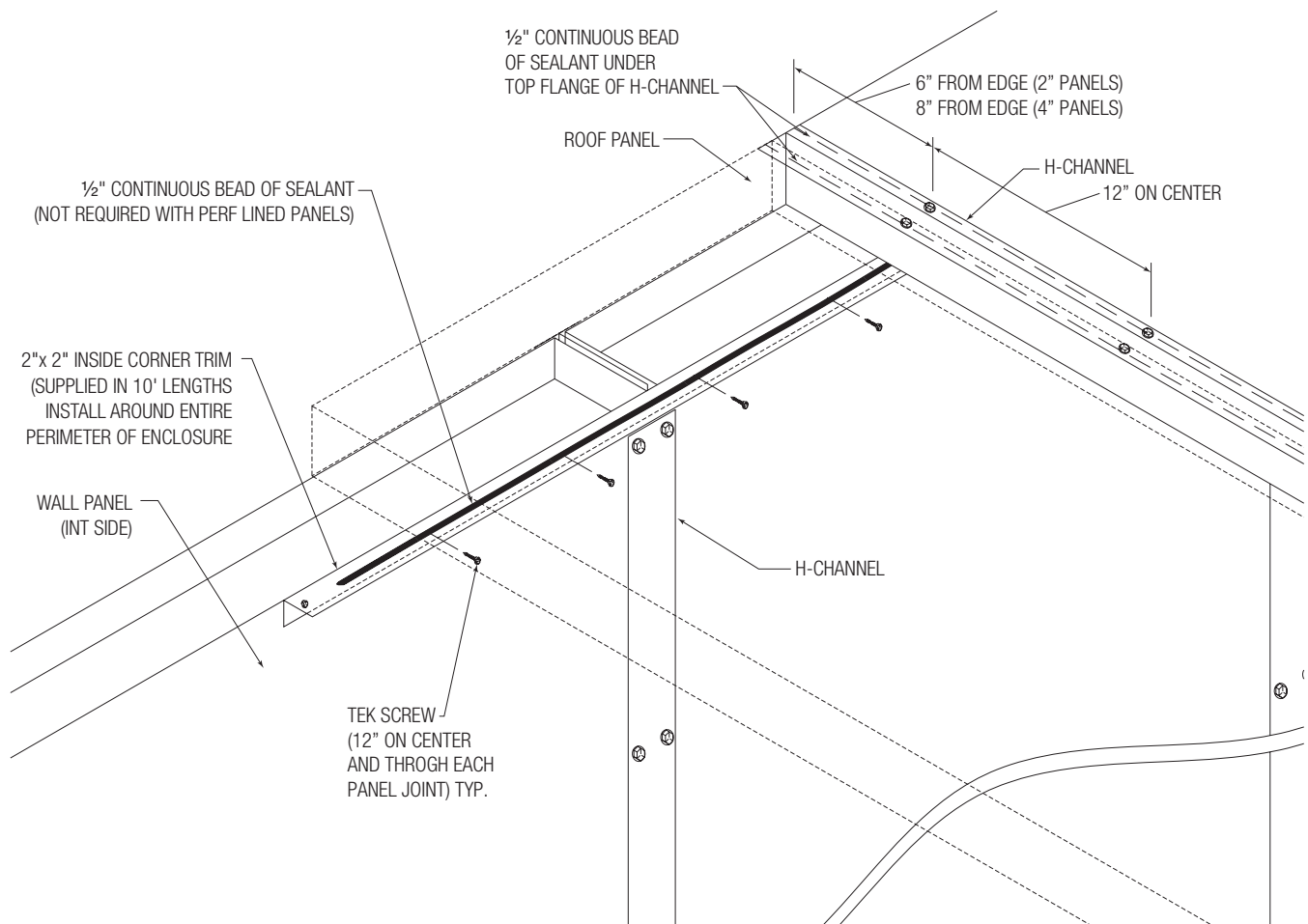
ACOUSTIC PANEL ENCLOSURE

ASSEMBLY INSTRUCTIONS

Roof Panel Installation

1. Review the roof plan on the assembly drawings and locate the necessary panels. **Note: If additional support or structure is required for the roof panels, it must be in place prior to installation.**
2. Install inside corner flashing around the inside perimeter of the side panels where the roof and wall panels meet. Flashing must be flush with the top of the side panels. Fasten the flashing to the side panels with Tek screws through every panel joint and 12" on center between joints.
3. Install the first roof panel. Be sure the panel is square and flush with the side panels. Fasten both ends of the roof panel through the inside flashing with Tek screws.
4. Cut H-channel to length required. Apply a generous bead of sealant to inside edge of both exterior flanges of H-channel. Place H-channel onto previously installed roof panel and Tek screw at each end of H-channel (approx 6" from ends for 2" panels and 8" from ends for 4" panels).
5. After installation of all roof panels is complete, Tek screw panels through inside corner flashing. Screws should be 12" on center. Additional screws should also be placed in both the exterior and interior flanges of the H-channel, 12" on center.

ROOF PANEL LAYOUT ▼



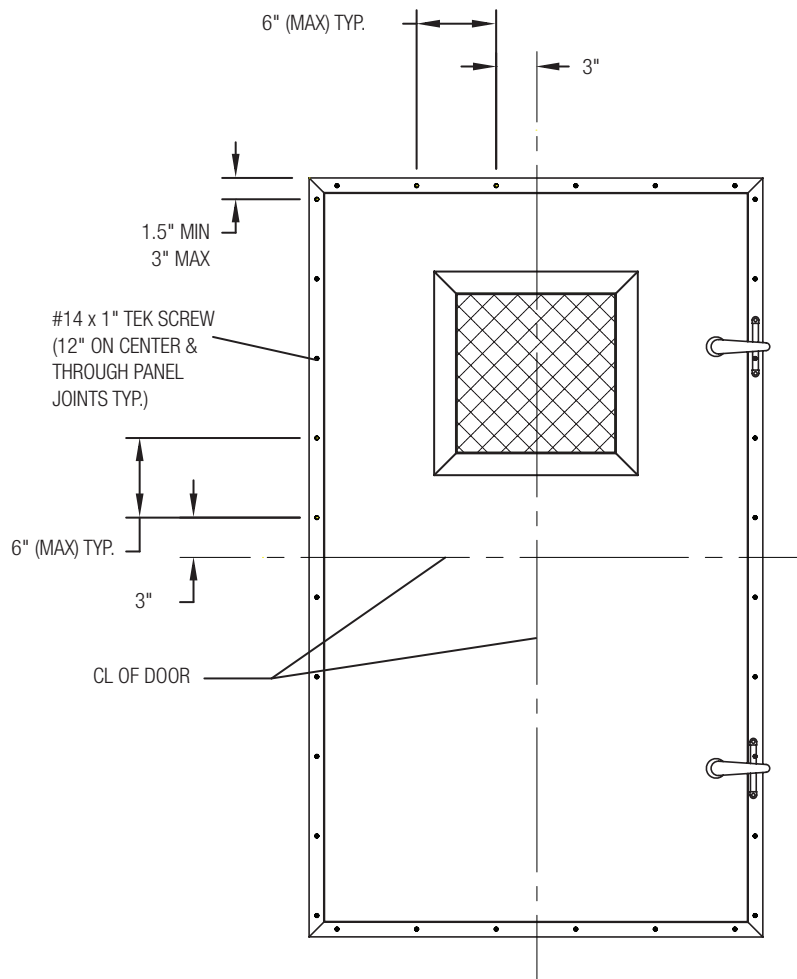
ACOUSTIC PANEL ENCLOSURE

ASSEMBLY INSTRUCTIONS

Doors Installation

1. Ensure that the opening is properly sized according to measurements provided on assembly drawings. Wall surface should be flat and even to prevent twisting or bowing of frame.
2. Apply a bead of sealant onto exterior wall around perimeter of enclosure opening.
3. Place closed door assembly into enclosure opening. Center and square door in opening. Do not stretch, compress or twist door frame.
4. Temporary shims may be used to help maintain the location and squares of the door until it is secured in place. The gap between the frame and door should be equal at the top, bottom and side opposite hinge to ensure squareness of door.
5. Secure door frame to wall with #14X1" Tek screws through flange. First, secure at four corners by locating screws approximately 2" from corner. Next secure additional screws maximum 6" on center, around perimeter of the frame.
6. Fully open and close door to confirm it is free from binding and closes evenly. Even closure occurs when door and frame surfaces are flush. If not, tighten or loosen screws to allow frame to become flush with door.
7. Apply a bead of sealant around perimeter of the frame to completely fill the void between wall opening and door frame.

DOOR LAYOUT ▼



ACOUSTIC PANEL ENCLOSURE

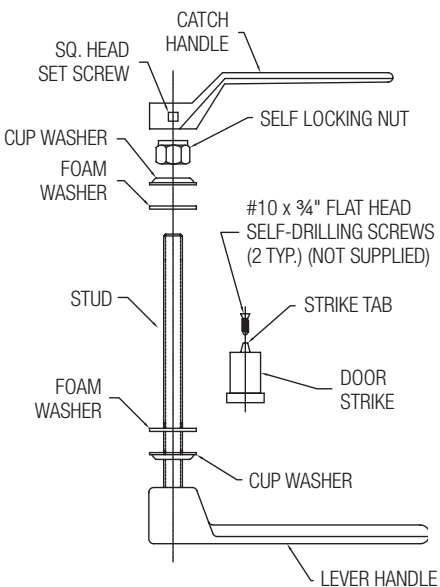
ASSEMBLY INSTRUCTIONS

Door Latch for 4" doors Ventlok #310

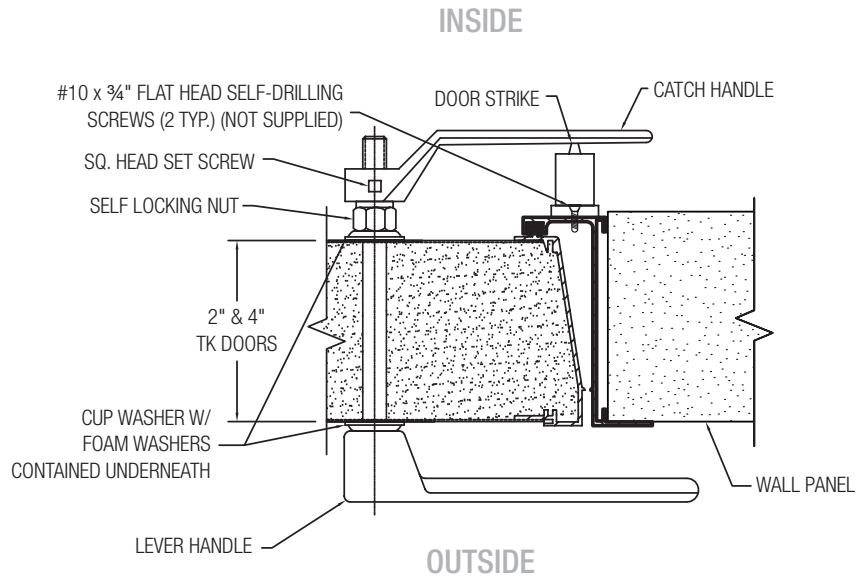
1. Slide cup washer and foam washer onto lever handle stud and insert stud through door.
2. Place foam washer and cup washer until the handle is snug, but can still turn easily.
3. Fasten door strike to outside of door frame with the middle of the door strike lined up with the center of the stud. The door strike tab should be on the top of it when in the closed position.
4. Slide catch handle onto stud, making sure set screw is lined up with flat side of the threads on the stud and secure in place with the set screw.
5. Close door and move handle to fully latched position. If gasketing does not compress, or latching is too difficult, adjust the self locking nut accordingly.

Note: *Handle with beveled flange goes on the outside of door for in-swing doors and on the inside for out-swing doors.

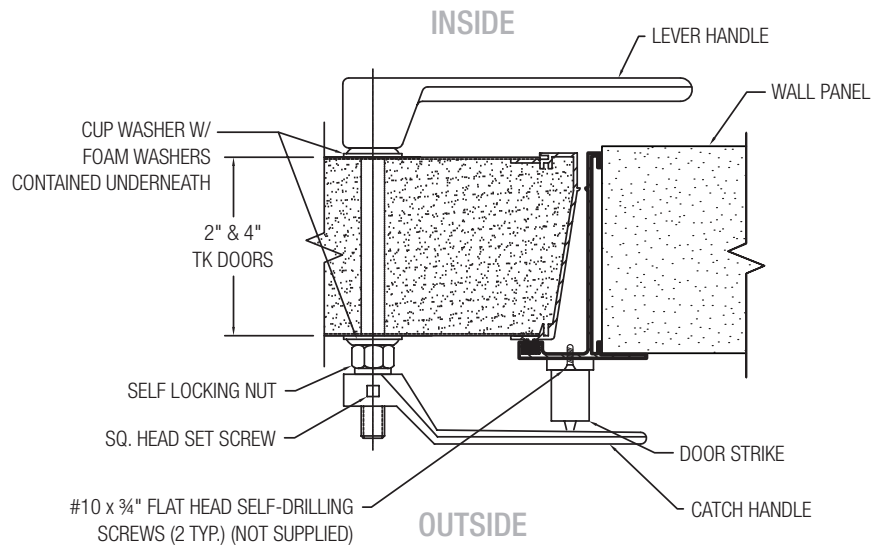
HANDLE PARTS ▼



OUT SWING HANDLE INSTALLATION ▼



IN SWING HANDLE INSTALLATION ▼



ACOUSTIC PANEL ENCLOSURE

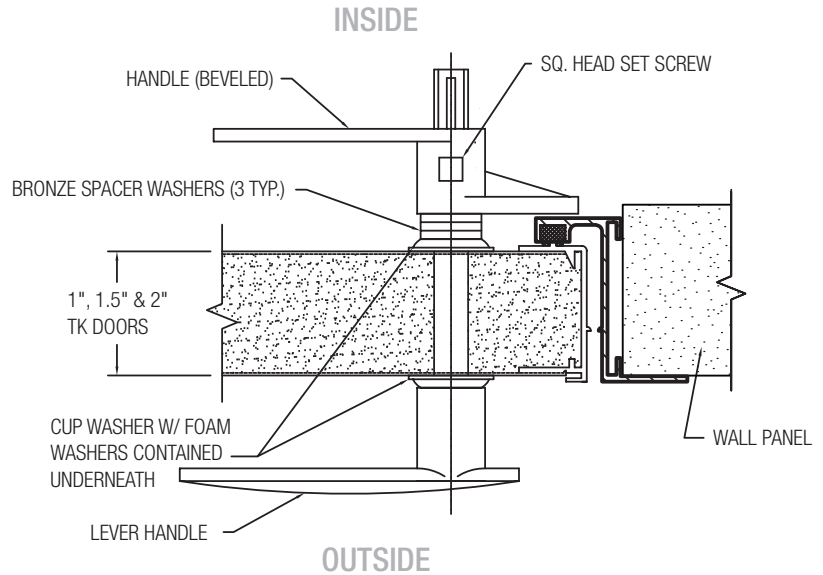
ASSEMBLY INSTRUCTIONS

Door Latch for 2" doors Ventlok #260

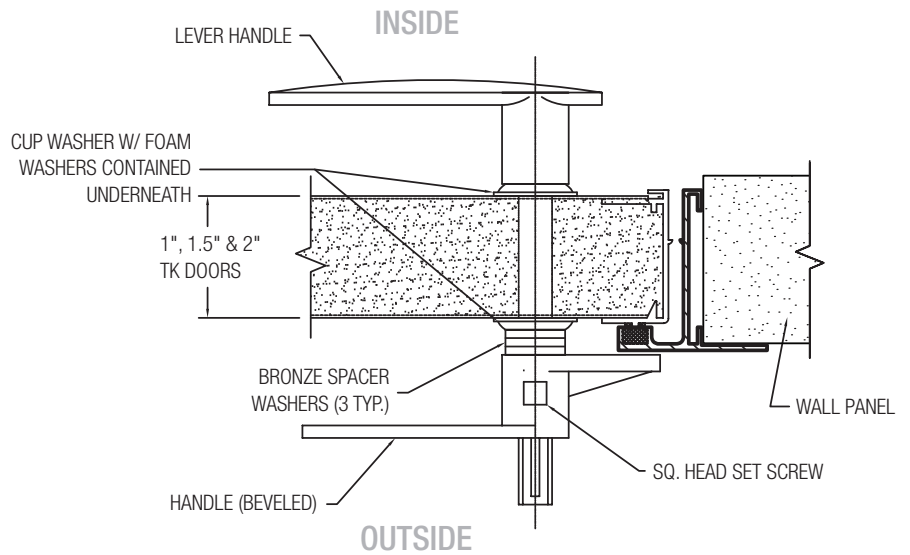
1. Slide cup washer and foam washer onto lever handle stud and insert stud through door.
2. Slide foam washer, cup washer and bronze spacer washers onto stud.
3. Slide handle with beveled flange onto stud.
4. While pressing handles together, secure handle with beveled flange to stud.
5. Close door and move handle to fully latched position. If the gasket does not compress, or latching is too difficult, adjust beveled handle.

Note: *Handle with beveled flange goes on the outside of door for in-swing doors and on the inside for out-swing doors.

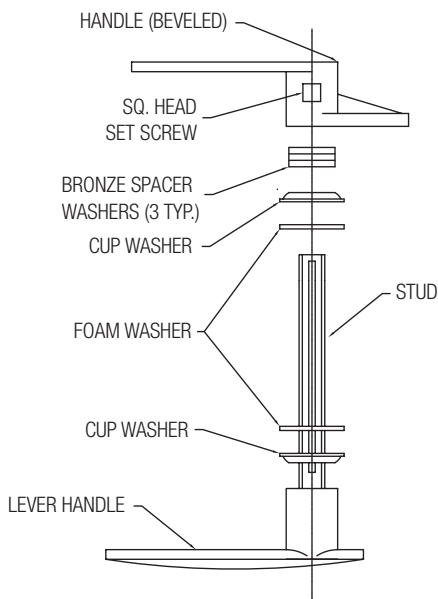
OUT SWING HANDLE INSTALLATION ▼



IN SWING HANDLE INSTALLATION ▼



HANDLE PARTS ▼



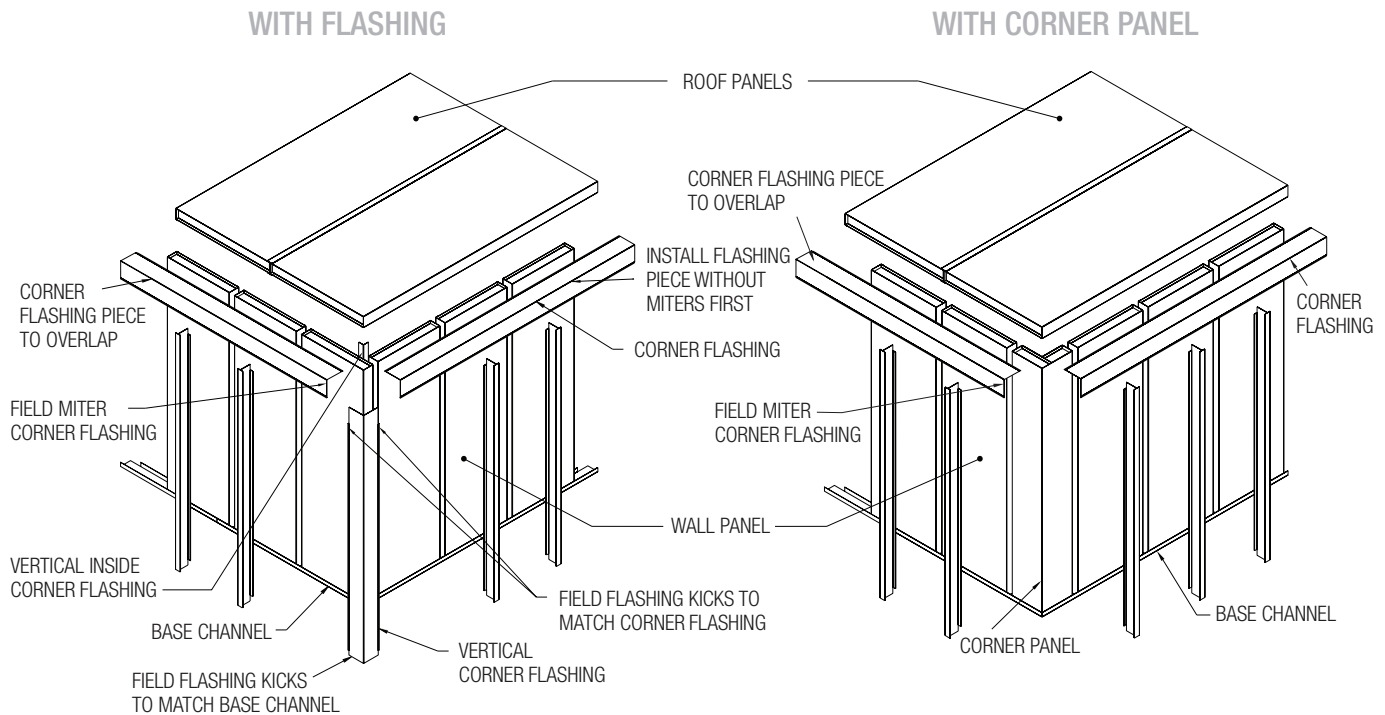
ACOUSTIC PANEL ENCLOSURE

ASSEMBLY INSTRUCTIONS

Flashing Installation

1. All flashing is supplied in 8' or 10' lengths, to be field cut to length as required. Flashing is to be secured to panels with Tek screws through each panel joint and on 12" centers between joints.
2. All exterior vertical flashing is to be installed first. Use outside corner flashing for outside corners, and inside corner flashing for inside corners.
3. Corner flashing is to be installed flush to the top of the roof panels and run to the bottom of the base channel. The kicks on the outside corner flashing should be notched to fit base channels.
4. Apply sealant to both legs of corner flashing and fasten to corners with Tek screws 12" on center.
5. Once all vertical flashing is installed, horizontal flashing can be installed around the perimeter of enclosure. Apply sealant to both legs of flashing and install with Tek screws on 12" centers.
6. Where splices are necessary, overlap the flashing by approx 6". Apply sealant generously behind overlap. Place Tek screws approx 1" in from each edge of overlap.
7. Flashing should be mitered at all outside corners. Kicks should be notched to accommodate vertical flashing already in place.

FLASHING INSTALLATION FOR OUTSIDE CORNER ▼




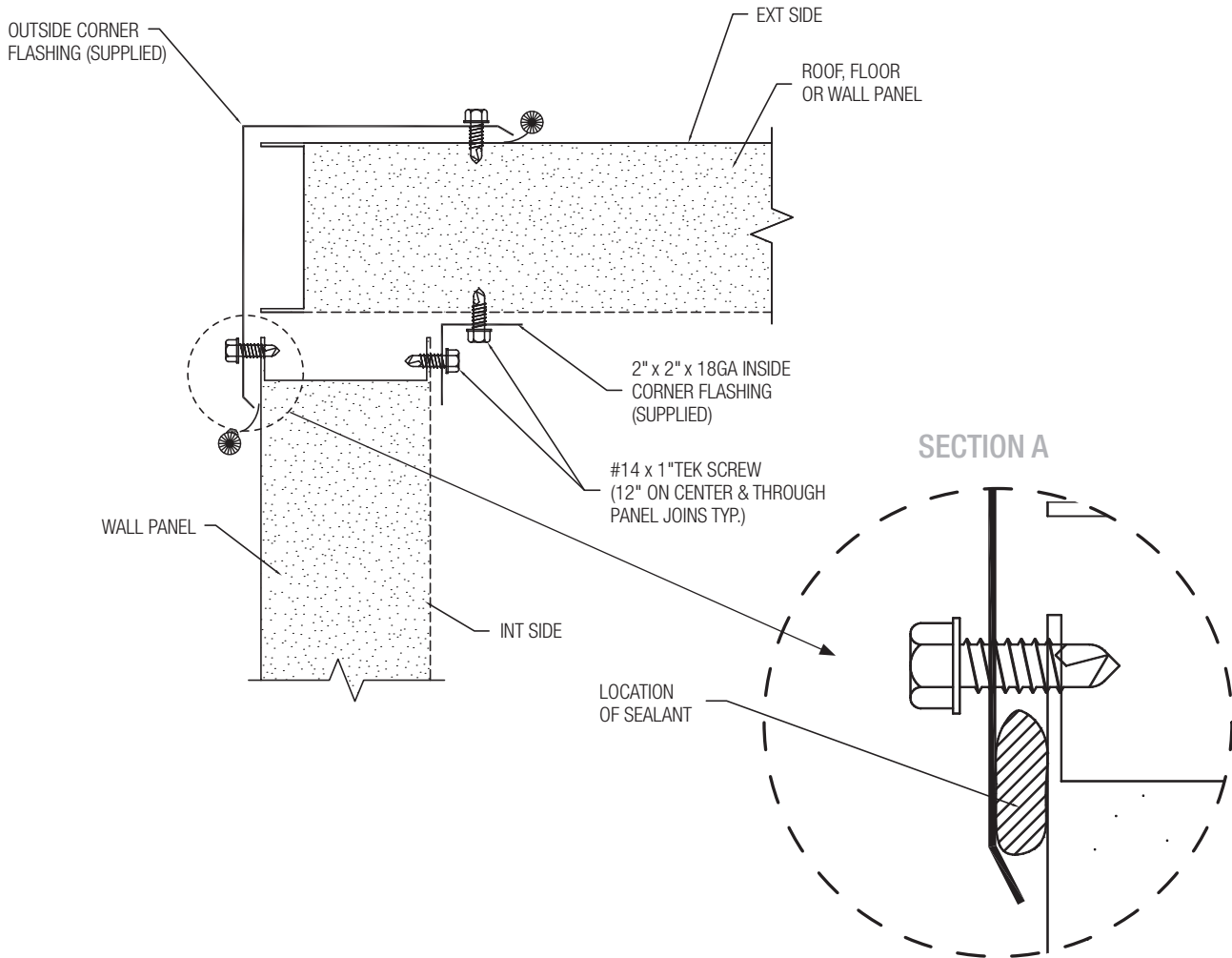
ACOUSTIC PANEL ENCLOSURE

SECTION DETAILS

SECTION A

WALL PANEL TO ROOF PANEL, CONNECTION OR CORNER DETAIL ▼

 APPLY SEALANT LOC (TYP.) TO AREAS WITH THIS SYMBOL




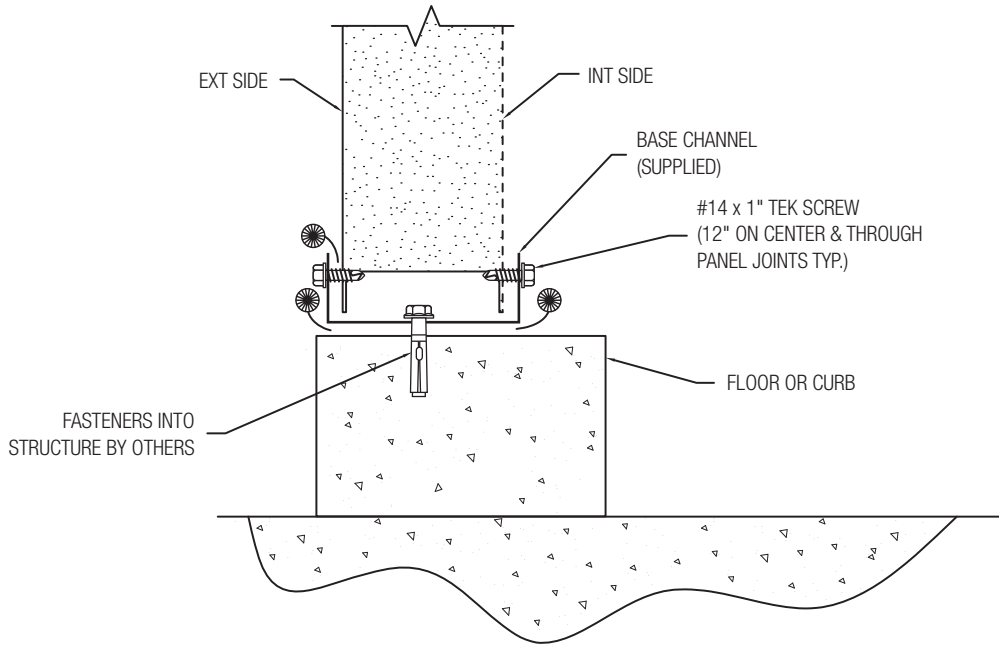
ACOUSTIC PANEL ENCLOSURE

SECTION DETAILS

SECTION B

PANEL TO STRUCTURE CONNECTION ▼


 APPLY SEALANT LOC (TYP.) TO AREAS WITH THIS SYMBOL

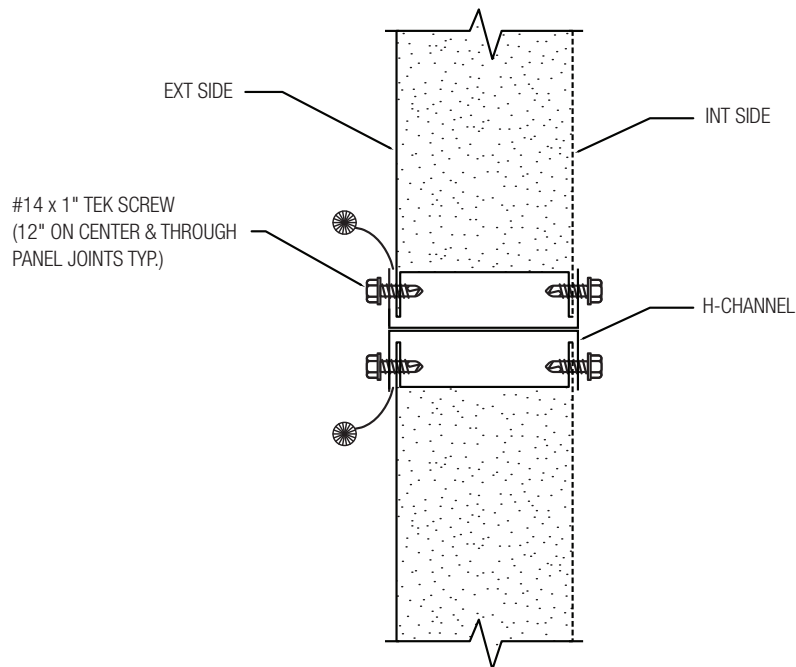


SECTION C

PANEL JOINT DETAIL (USE WHEN JOINING PANELS END-TO-END) ▼

Note: Not used on all Price enclosures

 APPLY SEALANT LOC (TYP.) TO AREAS WITH THIS SYMBOL




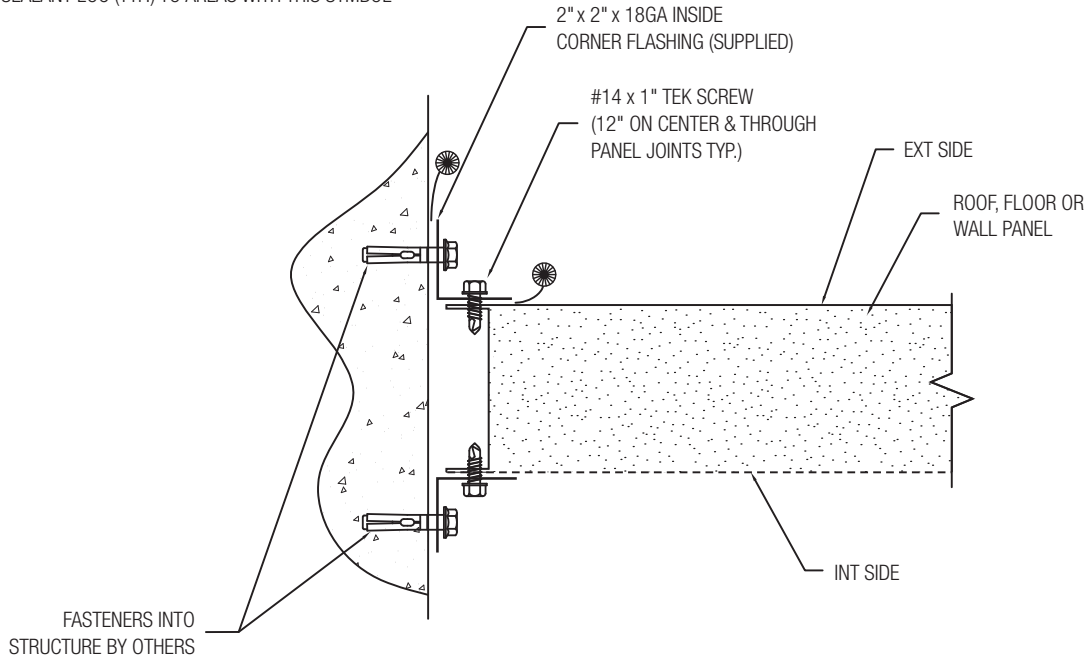
ACOUSTIC PANEL ENCLOSURE

SECTION DETAILS

SECTION D

PANEL TO STRUCTURE ▼


 APPLY SEALANT LOC (TYP.) TO AREAS WITH THIS SYMBOL

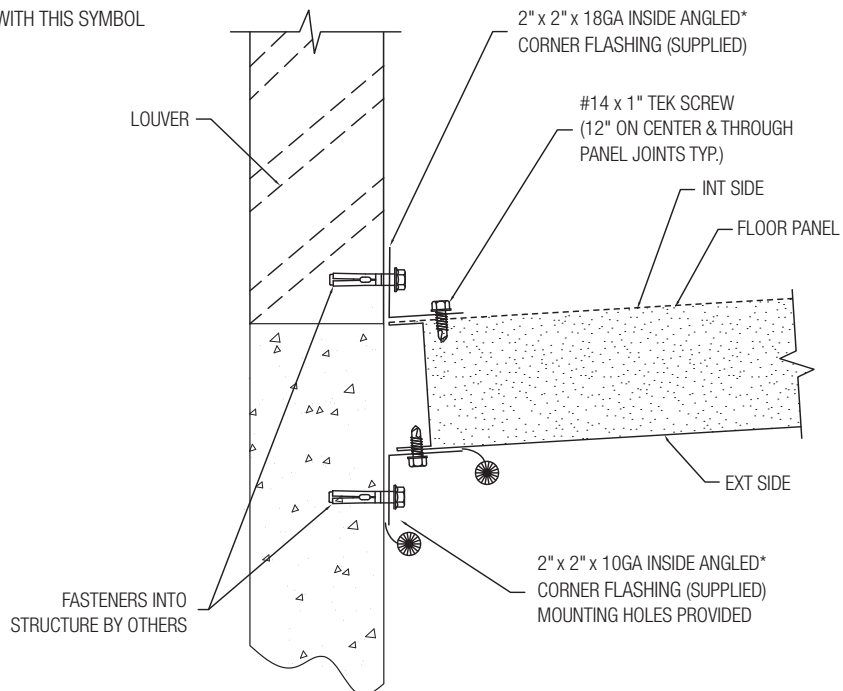


SECTION E

ANGLED FLOOR PANEL TO STRUCTURE ▼

*Flashing angle to match customer requirements determined at time of order

 APPLY SEALANT LOC (TYP.) TO AREAS WITH THIS SYMBOL



ACOUSTIC PANEL ENCLOSURE

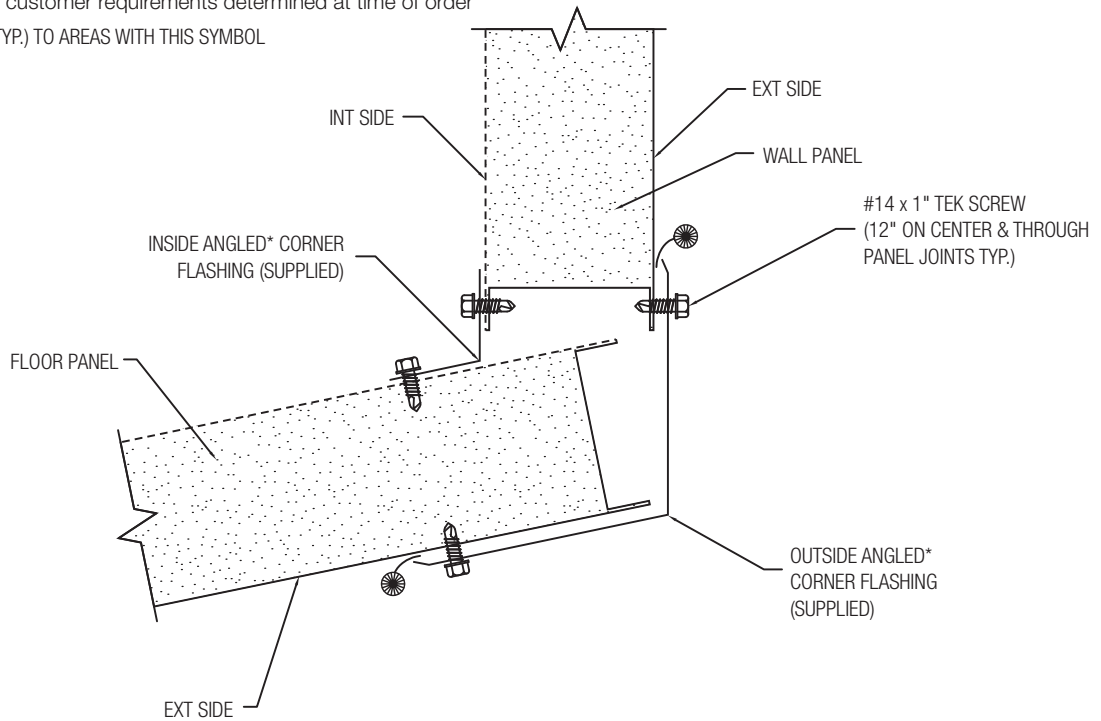
SECTION DETAILS

SECTION F

ANGLED FLOOR PANEL WALL PANEL CONNECTION ▼

*Flashing angle to match customer requirements determined at time of order

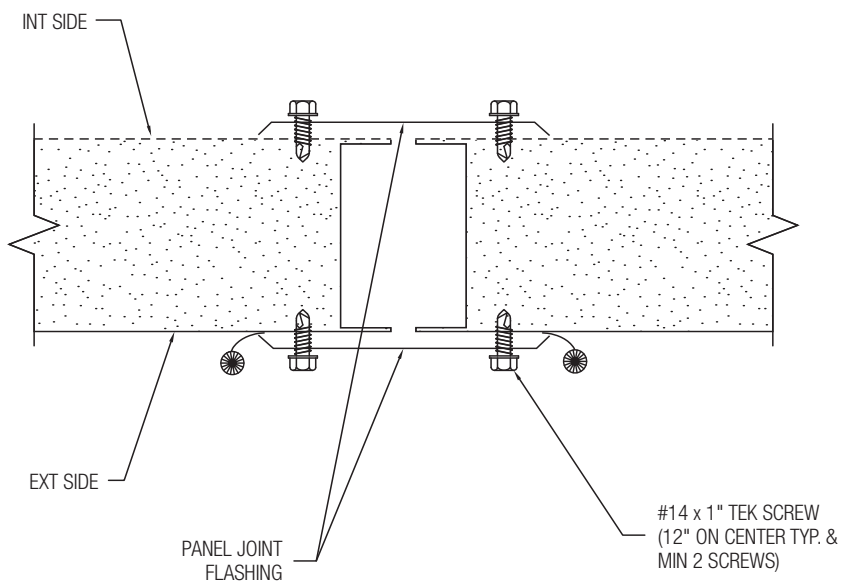
☀ APPLY SEALANT LOC (TYP.) TO AREAS WITH THIS SYMBOL



SECTION G

PANEL JOINT WITH JOINT FLASHING ▼

☀ APPLY SEALANT LOC (TYP.) TO AREAS WITH THIS SYMBOL




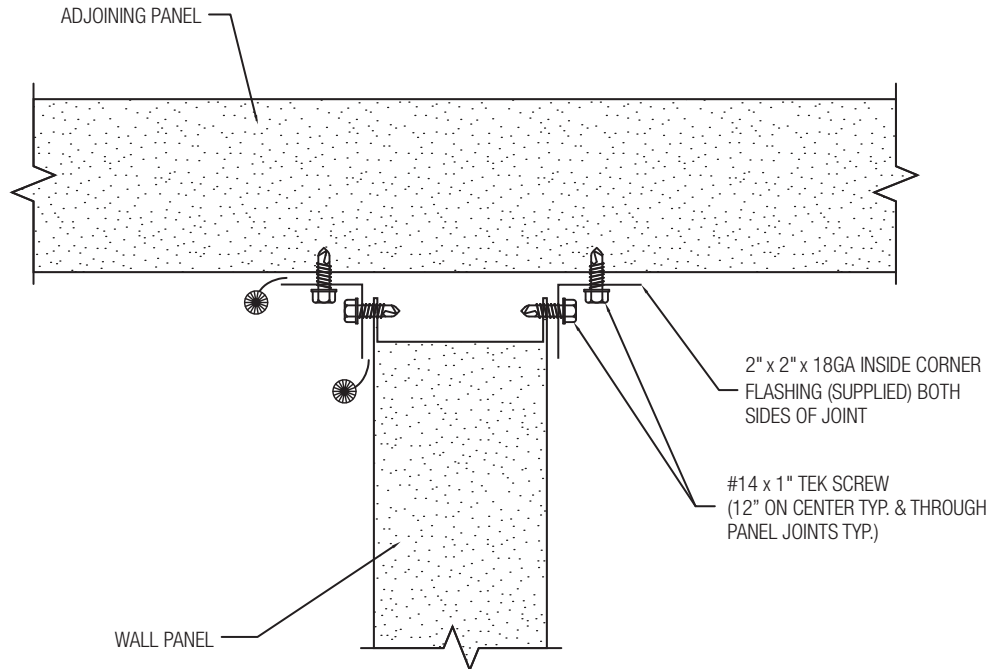
ACOUSTIC PANEL ENCLOSURE

SECTION DETAILS

SECTION H


PERPENDICULAR PANEL TO PANEL JOINT ▼

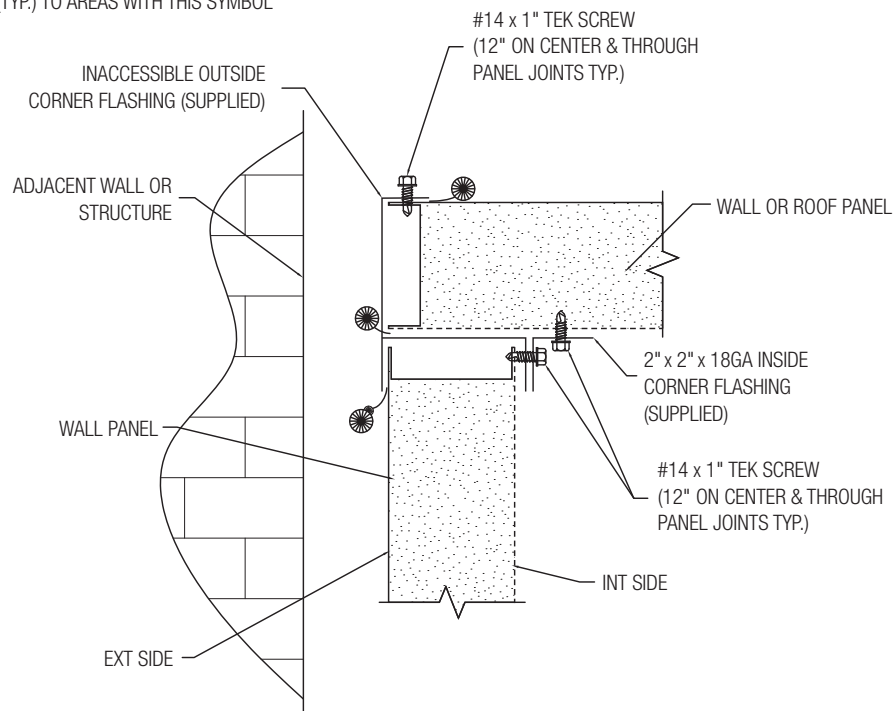
 APPLY SEALANT LOC (TYP.) TO AREAS WITH THIS SYMBOL



SECTION I

INACCESSIBLE CORNER FLASHING ▼

 APPLY SEALANT LOC (TYP.) TO AREAS WITH THIS SYMBOL




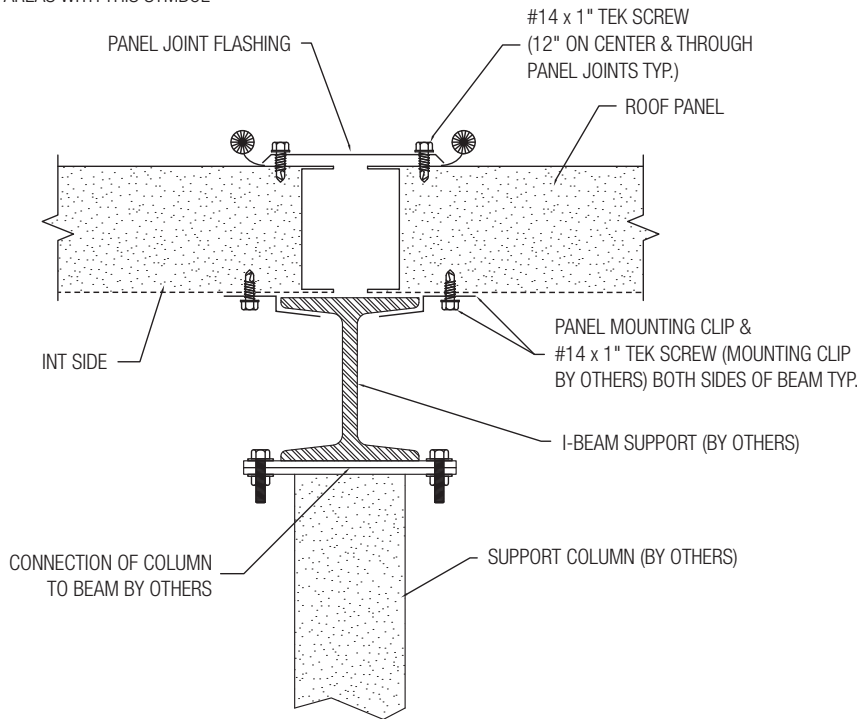
ACOUSTIC PANEL ENCLOSURE

SECTION DETAILS

SECTION J


ROOF PANEL SUPPORT (AT PANEL JOINT) ▼

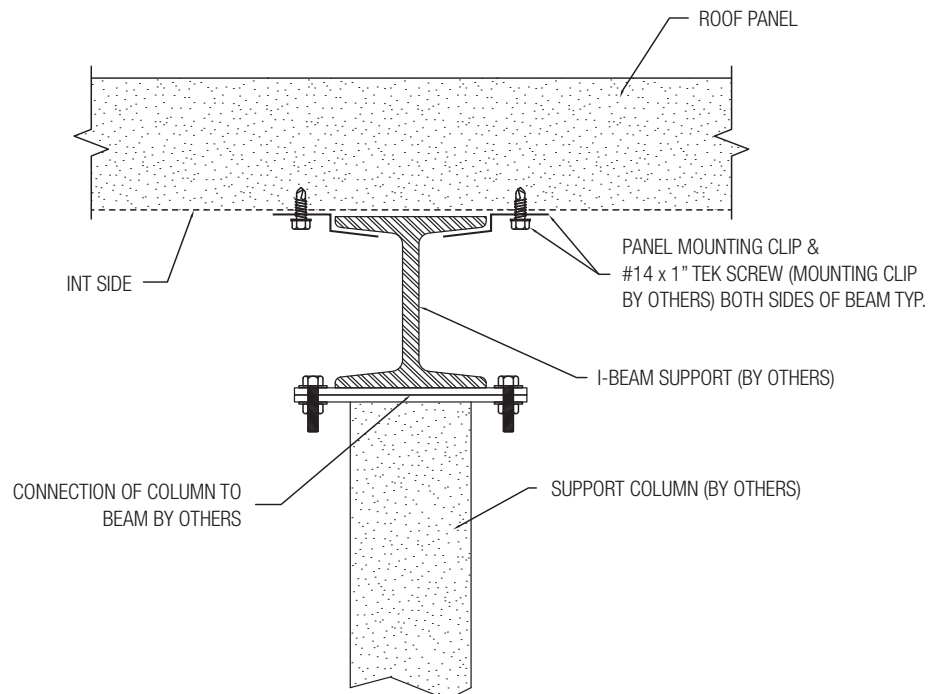
 APPLY SEALANT LOC (TYP.) TO AREAS WITH THIS SYMBOL



SECTION K

ROOF PANEL SUPPORT ▼

 APPLY SEALANT LOC (TYP.) TO AREAS WITH THIS SYMBOL




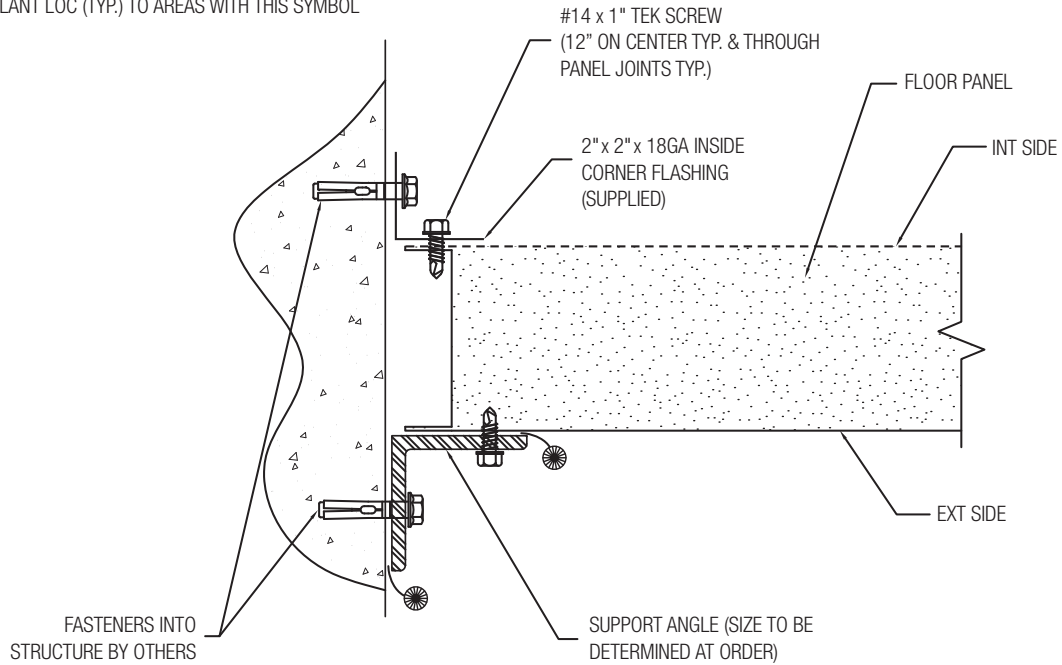
ACOUSTIC PANEL ENCLOSURE

SECTION DETAILS

SECTION L


FLOOR PANEL TO STRUCTURE CONNECTION ▼

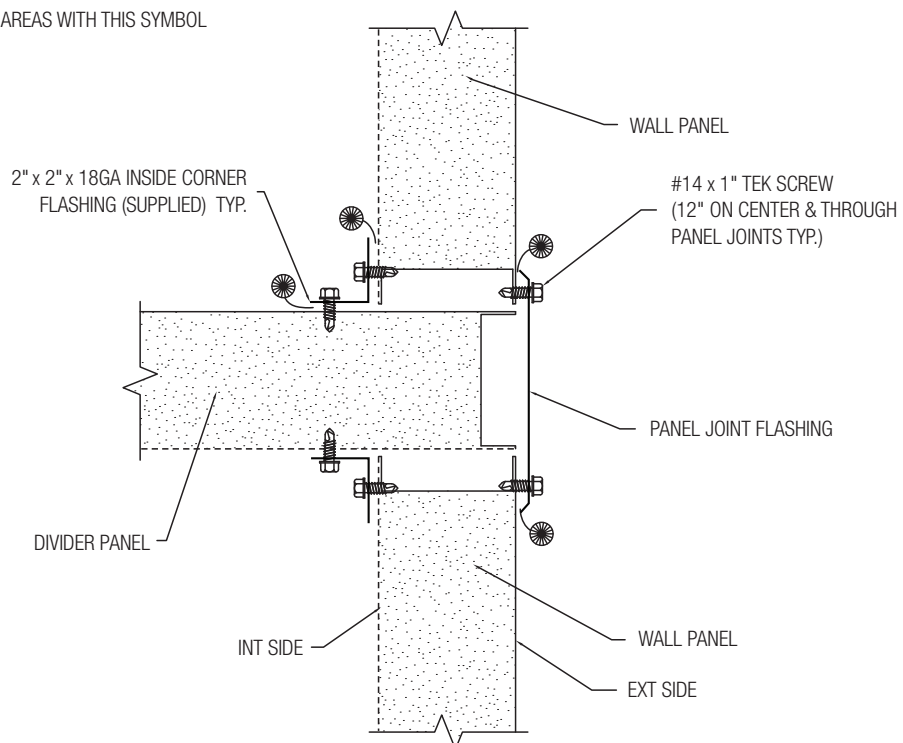
 APPLY SEALANT LOC (TYP.) TO AREAS WITH THIS SYMBOL



SECTION M

DIVIDER PANEL INSTALLATION ▼

 APPLY SEALANT LOC (TYP.) TO AREAS WITH THIS SYMBOL



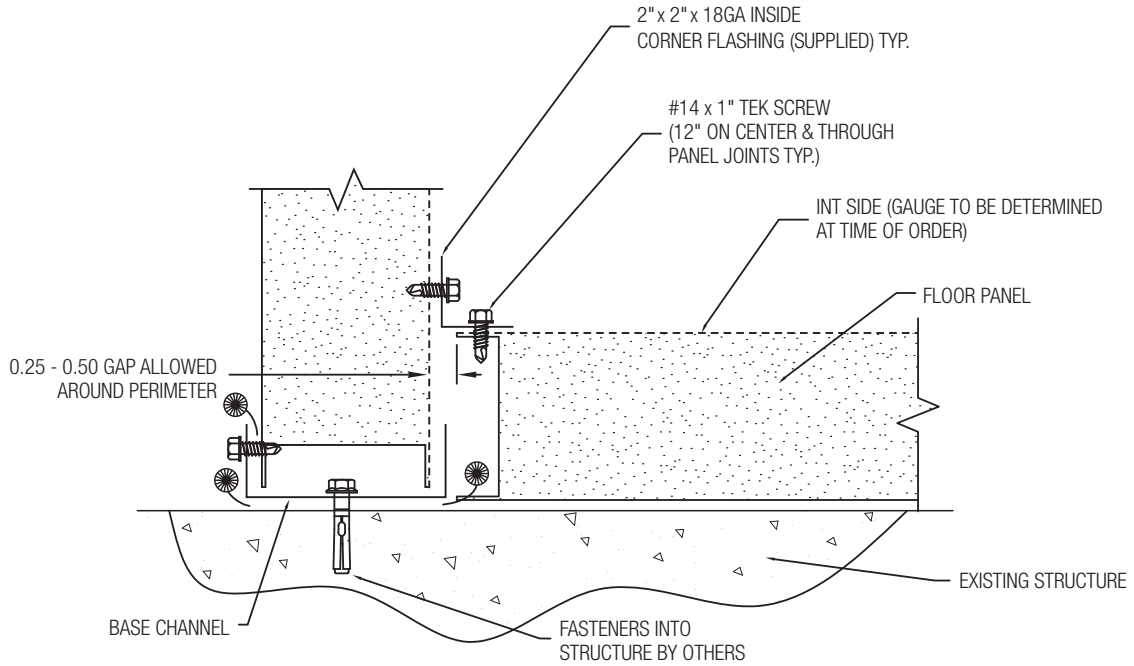
ACOUSTIC PANEL ENCLOSURE

SECTION DETAILS

SECTION N

FLOOR PANEL ON EXISTING STRUCTURE INSTALLATION ▼

 APPLY SEALANT LOC (TYP.) TO AREAS WITH THIS SYMBOL



This document contains the most current product information as of this printing.
For the most up-to-date product information, please go to www.priceindustries.com

© 2014 Price Industries Limited. All rights reserved.

price[®]