

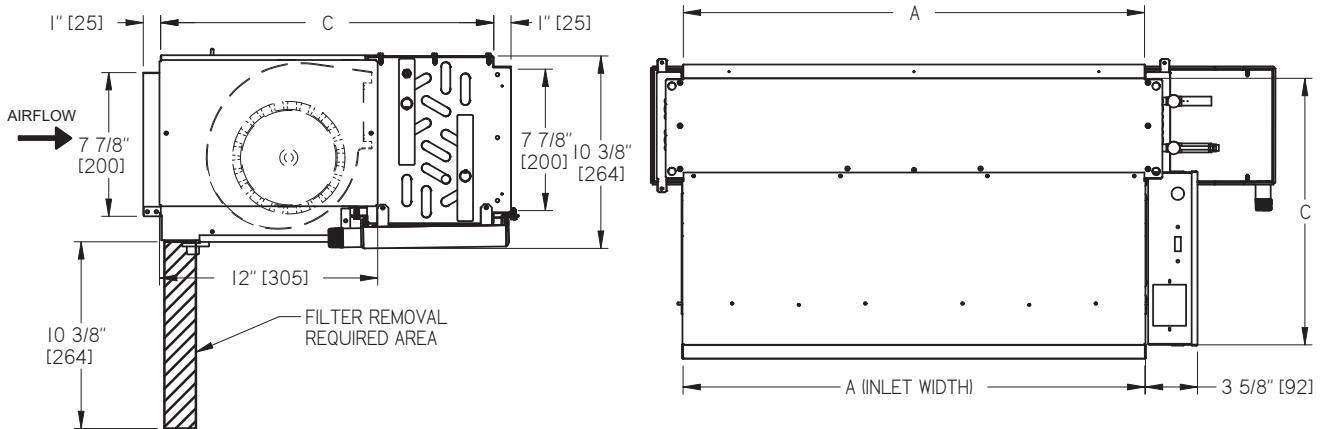
FAN AND BLOWER COIL

Service Access Clearance

Horizontal Low Profile Fan Coil Plenum Configuration (FCHP)

There are two return configurations for FCHP rear and bottom return. The service access clearance will depend on the configurations selected.

For FCHP configurations with rear return fan/motor/filter service clearance will be required at the bottom of the unit. For FCHP configuration with bottom return fan/motor/filter service clearance will be required from the rear side of the unit.



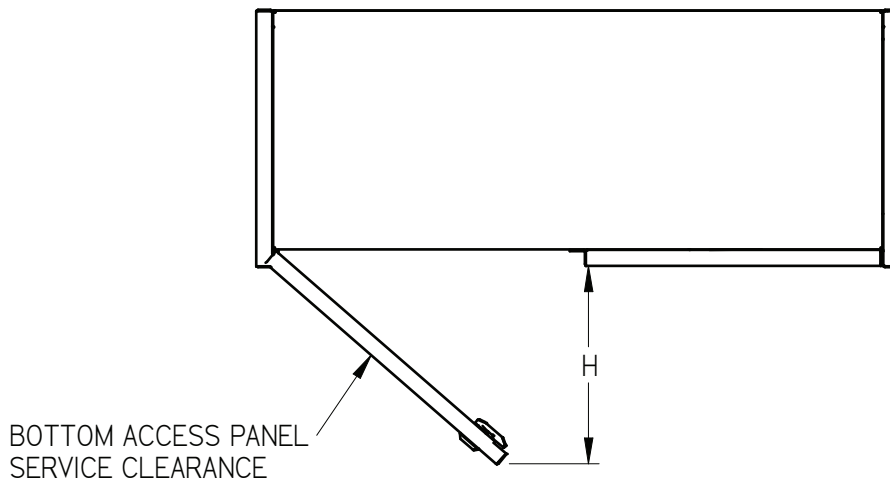
Unit Type	Unit Size	Configuration	Fan/Motor/Filter Bottom Access Clearance	Fan/Motor/Filter Rear Access Panel Clearance (W x H)
FCH	2	Plenum	10 3/8"	16" x 10 3/8"
FCH	3	Plenum	10 3/8"	20" x 10 3/8"
FCH	4	Plenum	10 3/8"	26" x 10 3/8"
FCH	6	Plenum	10 3/8"	32" x 10 3/8"
FCH	8	Plenum	10 3/8"	40" x 10 3/8"
FCH	10	Plenum	10 3/8"	52" x 10 3/8"
FCH	12	Plenum	10 3/8"	60" x 10 3/8"

FAN AND BLOWER COIL

Service Access Clearance

Horizontal Low Profile Fan Coil Exposed Configuration (FCHE)

The FCHE units with bottom and rear return configurations would require fan/motor/filter service access from the bottom of the unit.



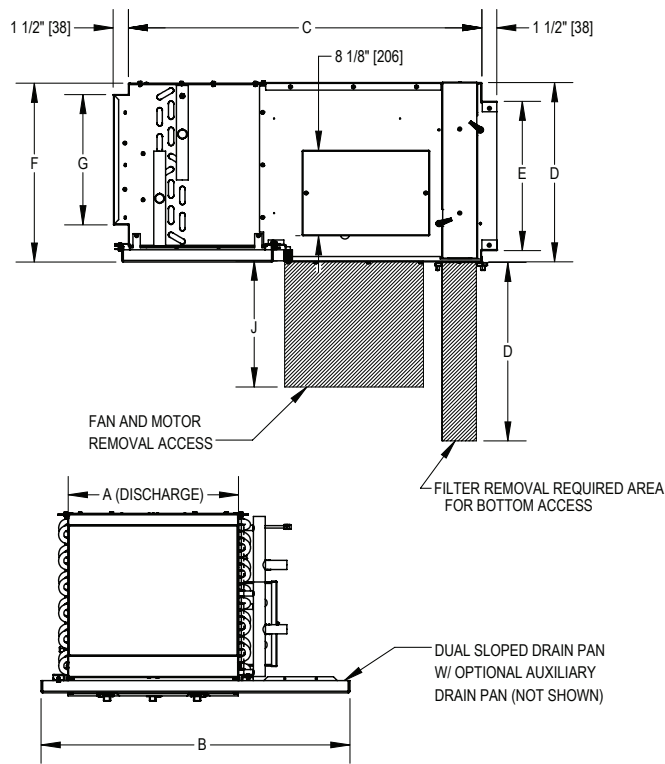
Unit Type	Unit Size	Configuration	Fan/Motor/Filter Bottom Access Clearance
FCH	2	Exposed	14 1/2"
FCH	3	Exposed	14 1/2"
FCH	4	Exposed	14 1/2"
FCH	6	Exposed	14 1/2"
FCH	8	Exposed	14 1/2"
FCH	10	Exposed	14 1/2"
FCH	12	Exposed	14 1/2"

FAN AND BLOWER COIL

Service Access Clearance

Horizontal High Performance Fan Coil Plenum Configuration (FHPP)

For FHPP configurations with rear return fan/motor/filter service clearance will be required at the bottom of the unit. For FHPP configuration with bottom return fan/motor/filter service clearance will be required from the rear of the unit.



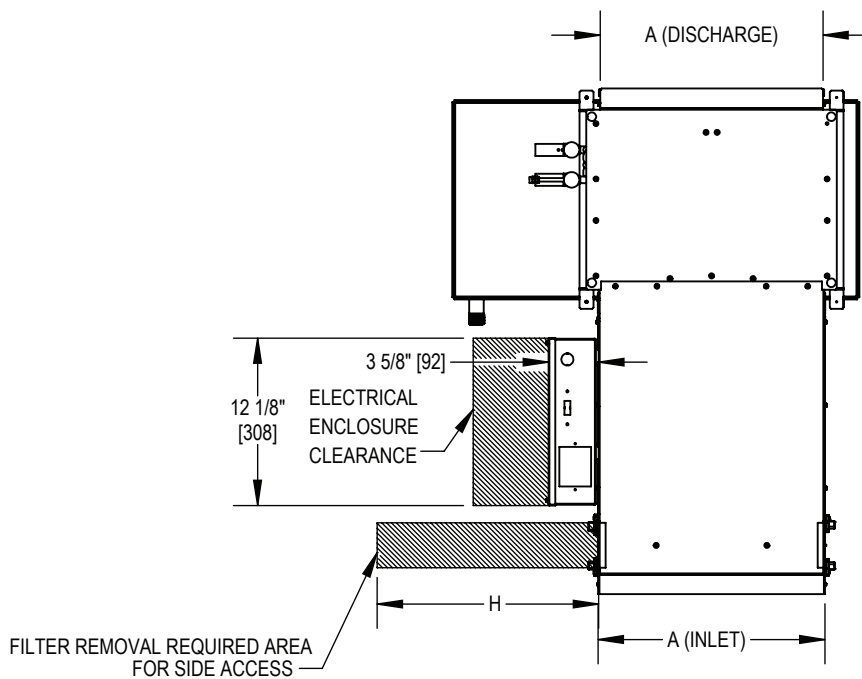
Unit Type	Unit Size	Configuration	Fan/Motor/Filter Bottom Access Clearance (W x H)
FHP	6	Plenum	17 1/8"
FHP	8	Plenum	17 1/8"
FHP	10	Plenum	17 1/8"
FHP	12	Plenum	17 1/8"
FHP	16	Plenum	17 1/8"
FHP	18	Plenum	21 3/8"
FHP	20	Plenum	17 1/8"
FHP	26	Plenum	21 3/8"

FAN AND BLOWER COIL

Service Access Clearance

Horizontal High Performance Fan Coil Plenum Configuration (FHPP)

For FHPP configurations with rear return fan/motor/filter service clearance will be required at the bottom of the unit. For FHPP configuration with bottom return fan/motor/filter service clearance will be required from the rear of the unit.



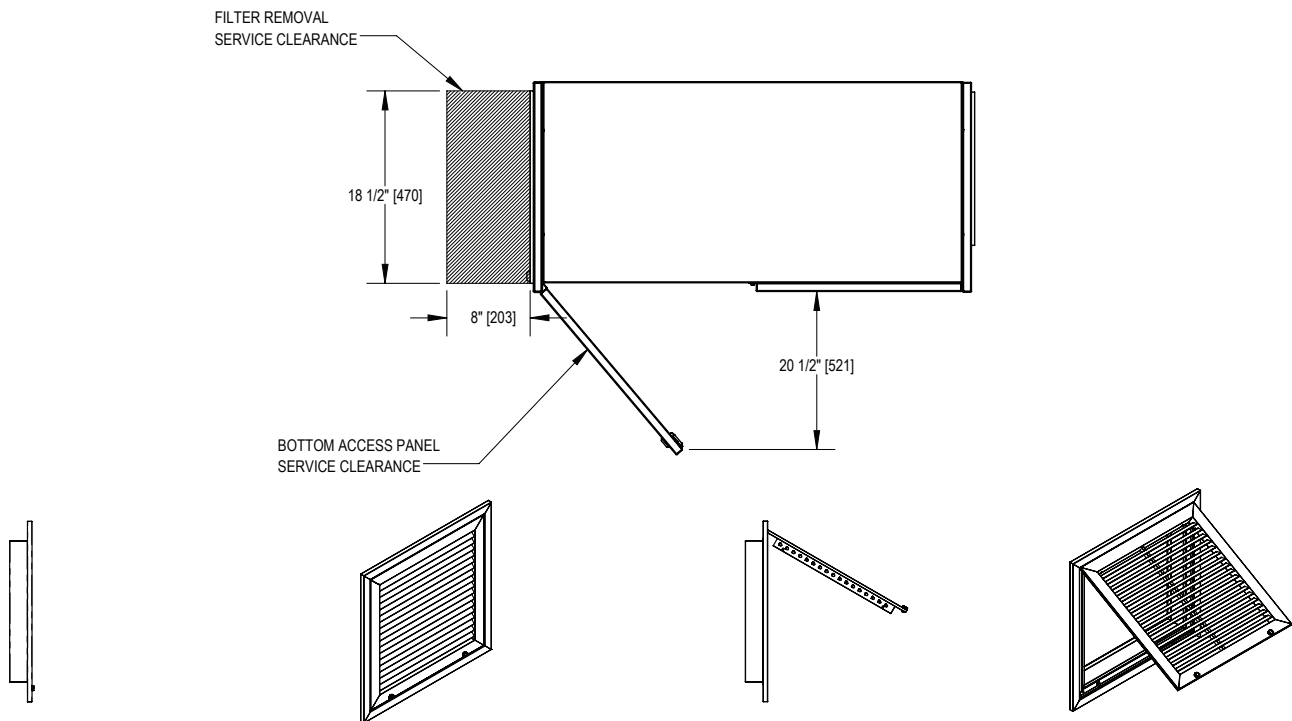
Unit Type	Unit Size	Configuration	Fan/Motor/Filter Rear Access Panel Clearance (W x H)
FHP	6	Plenum	16" x 17 1/8"
FHP	8	Plenum	20" x 17 1/8"
FHP	10	Plenum	24" x 17 1/8"
FHP	12	Plenum	16" x 17 1/8"
FHP	16	Plenum	20" x 17 1/8"
FHP	18	Plenum	20" x 21 3/8"
FHP	20	Plenum	24" x 17 1/8"
FHP	26	Plenum	24" x 21 3/8"

FAN AND BLOWER COIL

Service Access Clearance

Horizontal High Performance Fan Coil Exposed Configuration (FHPE)

For FHPE configurations, fan/motor service clearance will be required at the bottom of the unit. For filter service clearance, the filter is in return filter grille and filter grille operation is shown below.



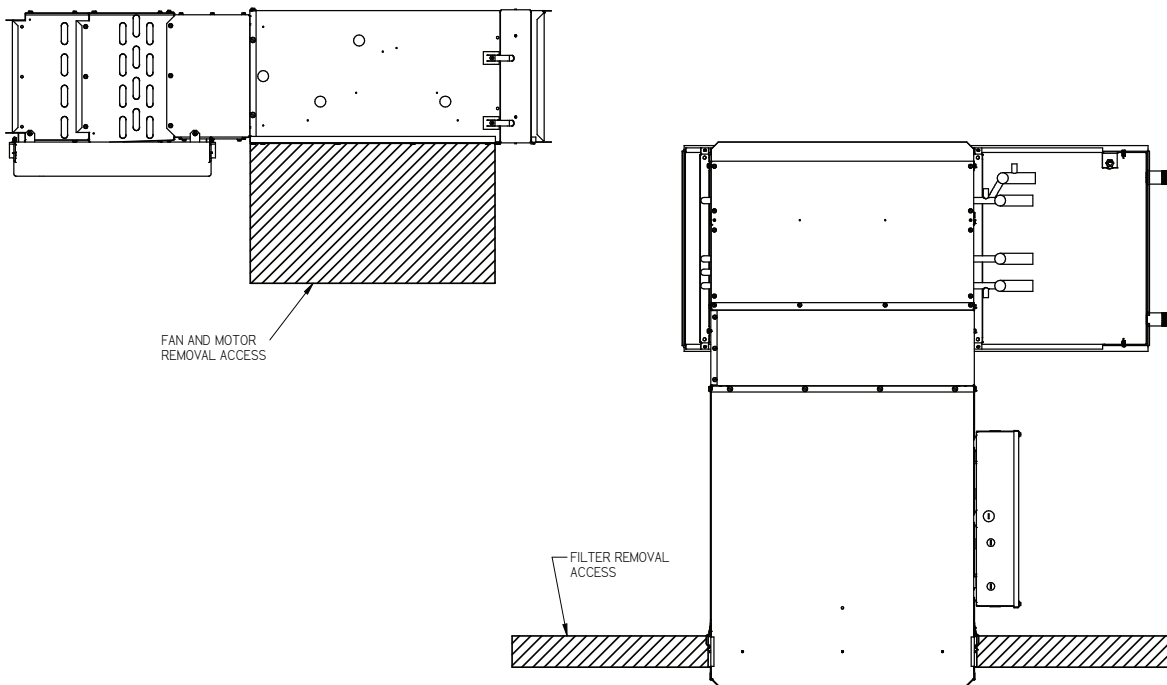
Unit Type	Unit Size	Configuration	Filter Grille Dimension (W x H)	Filter Width	Bottom Access Panel Clearance
FHP	6	Exposed	18 1/2" x 8"	18 1/2"	20 1/2"
FHP	8	Exposed	18 1/2" x 8"	22 1/2"	20 1/2"
FHP	10	Exposed	18 1/2" x 8"	26 1/2"	20 1/2"
FHP	12	Exposed	18 1/2" x 8"	34 1/2"	20 1/2"
FHP	16	Exposed	18 1/2" x 8"	42 1/2"	20 1/2"
FHP	18	Exposed	18 1/2" x 8"	34 1/2"	20 7/2"
FHP	20	Exposed	18 1/2" x 8"	50 1/2"	20 1/2"
FHP	26	Exposed	18 1/2" x 8"	50 1/2"	20 7/2"

FAN AND BLOWER COIL

Service Access Clearance

Horizontal High Performance Fan Coil (FCHG)

For FCHG with rear return, fan/motor clearance will be required at the bottom of the unit and filter service access will be available at both the left and right side of the filter section.



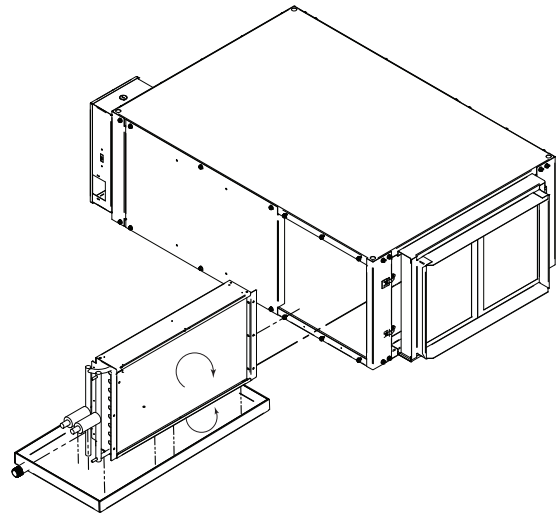
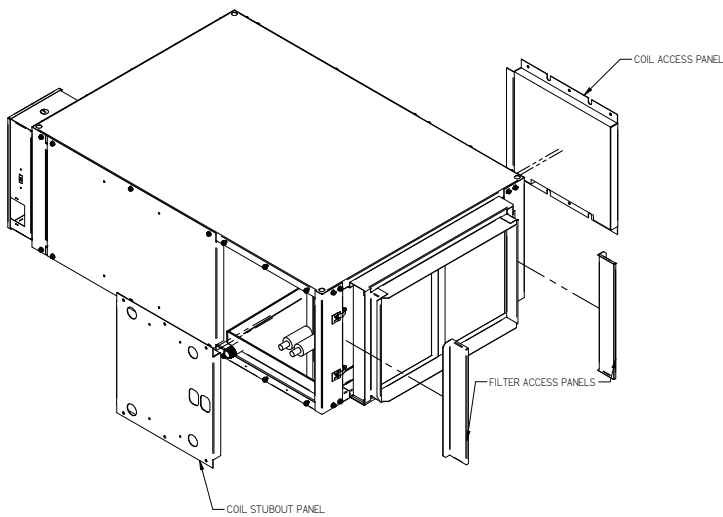
Unit Type	Unit Size	Filter Side Access Clearance	Fan/Motor Bottom Access Clearance
FCHG	20	21 1/8"	10 1/2"
FCHG	30	21 1/8"	10 1/2"
FCHG	40	26 1/8"	12 1/2"
FCHG	50	42 1/8"	10 1/2"
FCHG	60	48 1/8"	12 1/2"
FCHG	70	60 1/8"	12 1/2"

FAN AND BLOWER COIL

Service Access Clearance

Horizontal Direct-Drive Blower Coil (BCHD)

For BCHD with rear return, fan/motor access will be available on the left, right, and bottom sides of the unit. Filter access will be available on the left, right, and bottom, sides of the filter section.



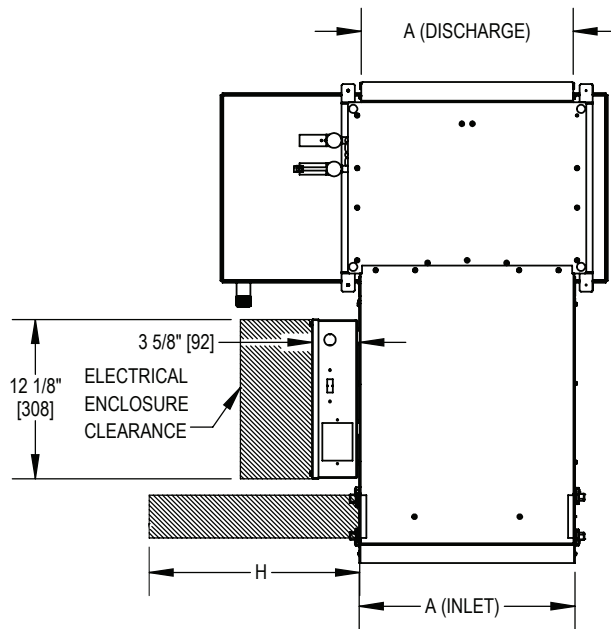
Unit Type	Unit Size	Filter/Fan/Motor Side Access Clearance	Fan/Blower Bottom Access Clearance
BCHD	8	27 3/16"	N/A *
BCHD	12	27 3/16"	14 3/8"
BCHD	16	27 3/16"	18"
BCHD	20	27 3/16"	18"
BCHD	30	27 3/16"	23 7/8"
BCHD	40	27 3/16"	23 7/8"

*Note: BCHD unit size 8 does not have bottom access for service.

FAN AND BLOWER COIL

Service Access Clearance

FCH and FHP units Electrical Enclosure Dimensions

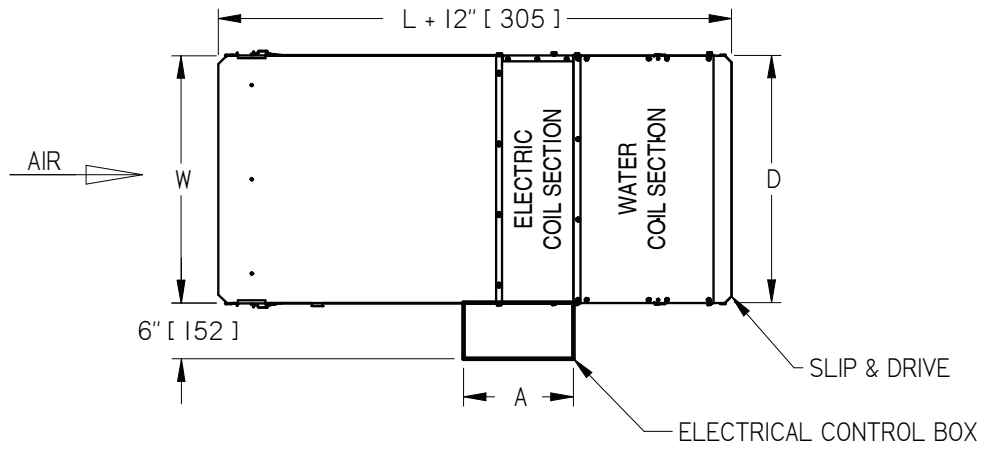


Unit Type	Unit Size	Electrical Enclosure Clearance (W x H)	Unit Type	Unit Size	Electrical Enclosure Clearance (W x H)
FCH	2	12 1/8" x 8 1/8"	FHP	6	12 1/8" x 8 1/8"
FCH	3	12 1/8" x 8 1/8"	FHP	8	12 1/8" x 8 1/8"
FCH	4	12 1/8" x 8 1/8"	FHP	10	12 1/8" x 8 1/8"
FCH	6	12 1/8" x 8 1/8"	FHP	12	12 1/8" x 8 1/8"
FCH	8	12 1/8" x 8 1/8"	FHP	16	12 1/8" x 8 1/8"
FCH	10	12 1/8" x 8 1/8"	FHP	18	12 1/8" x 8 1/8"
FCH	12	12 1/8" x 8 1/8"	FHP	20	12 1/8" x 8 1/8"
			FHP	26	12 1/8" x 8 1/8"

FAN AND BLOWER COIL

Service Access Clearance

FCHG Electrical Controls Enclosure

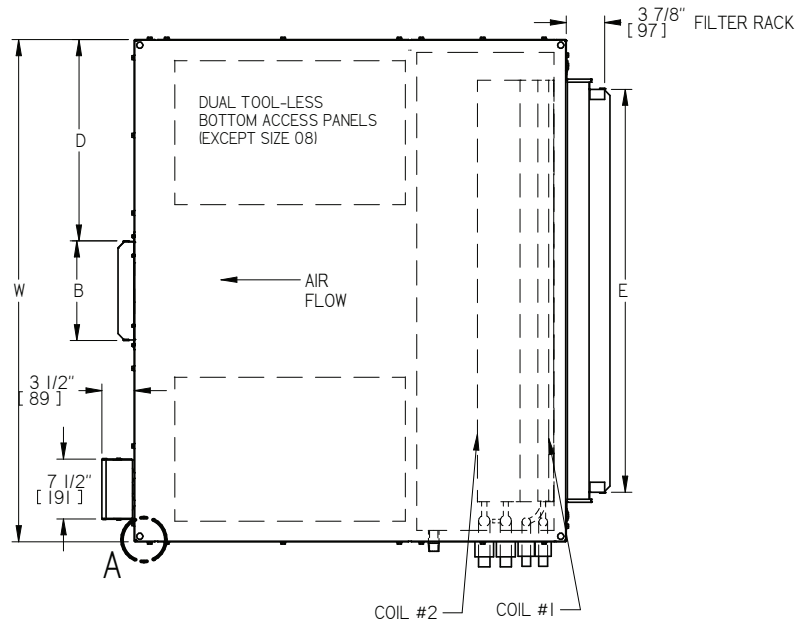


Unit Type	Unit Size	Electric Enclosure Clearance (WxH)
FCHG	20	22" x 10"
FCHG	30	22" x 10"
FCHG	40	18" x 12"
FCHG	50	22" x 10"
FCHG	60	18" x 12"
FCHG	70	18" x 12"

FAN AND BLOWER COIL

Service Access Clearance

BCHD Electrical Controls Enclosure



Unit Type	Unit Size	Electrical Enclosure Clearance (W x H)
BCHD	8	14" x 7 1/2"
BCHD	12	14" x 7 1/2"
BCHD	16	14" x 7 1/2"
BCHD	20	14" x 7 1/2"
BCHD	30	14" x 7 1/2"
BCHD	40	14" x 7 1/2"

FAN AND BLOWER COIL

Service Access Clearance

NEC Clearance Recommendation

Working Space	Voltage-to-Ground	
	0-150V	151-600V
Condition 1 – Exposed live parts on one side of the working space and no live or grounded parts, including concrete, brick, or tile walls and are on the other side of the working space.	3 ft	3 ft
Condition 2 – Exposed live parts on one side of the working space and grounded parts, including concrete, brick, or tile walls and are on the other side of the working space.	3 ft	3 1/2 ft
Condition 3 – Exposed live parts on both sides of the working space.	3 ft	4 ft

Price does not have specific restrictions on clearances, but we do recommend adherence to the National Electric Code (NEC) and any local codes when determining appropriate minimum electrical clearance for service. The NEC describes the attached clearances.